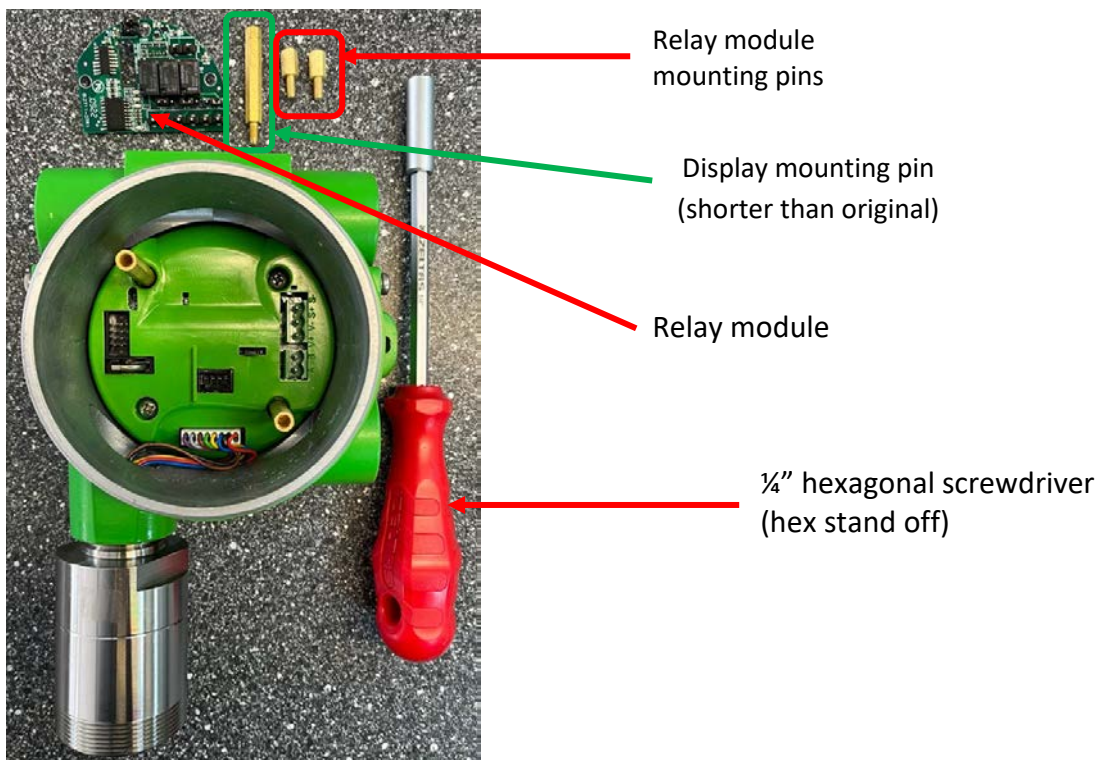


### PQ Series Relay Module Installation

PQ Series has optional relay module that can be installed on factory or field. If device ordered by relay module, it will be installed to PQ series device at factory and delivered all settings have been done. It is possible to install relay module at field after ordering the PQ Series detector. Please follow below steps to install relay module to PQ Series detector.

#### Material:

PQ Series Relay Module will be delivered with additional three mounting pins. If these mounting pins are not available installation of the relay module would not be possible. A ¼" hexagonal screwdriver (hex stand off) must be used to remove display mounting pin. The material and tools are shown in picture:



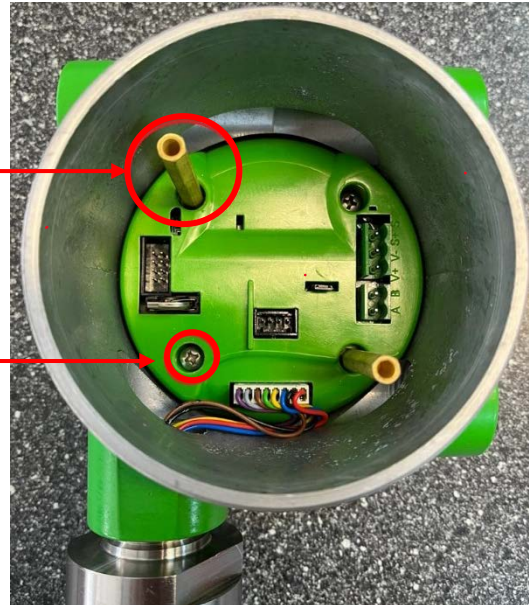
#### Installation:

Ensure device is working fine prior any action. Make sure you have suitable conditions and necessary permissions related to site as installation requires opening the detector lid. This can be create serious problems in hazardous atmosphere. Follow below steps when ready:

- 1- Power-off detector
- 2- Loosen the screw keeping lid secure via using allen key nr4.
- 3- Remove the cover
- 4- Remove the display module form its location in case of PQD. PQN does not have display module. You will see transmitter and display mounting pins as follows.

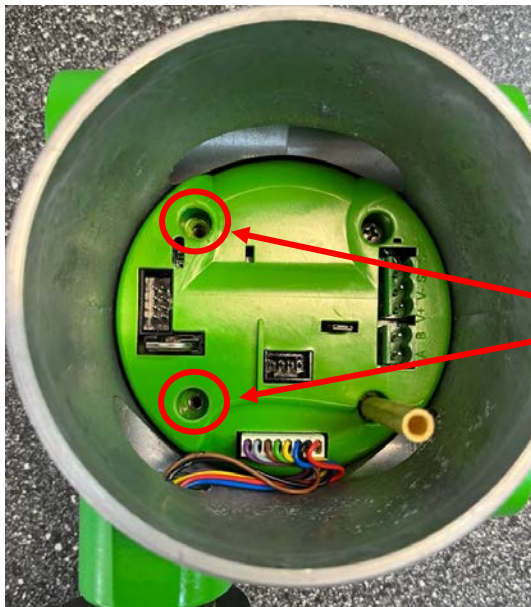
Display mounting pin must be removed

Transmitter screw must be removed



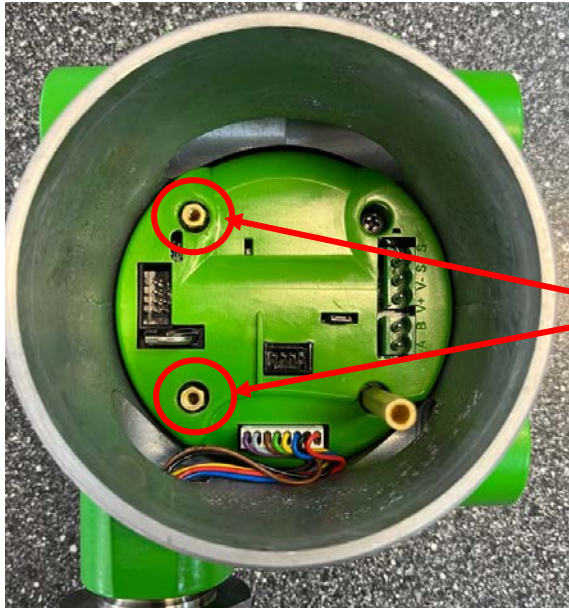
The display mounting pin and transmitter screw must be removed:

5- The status after removal as follows:



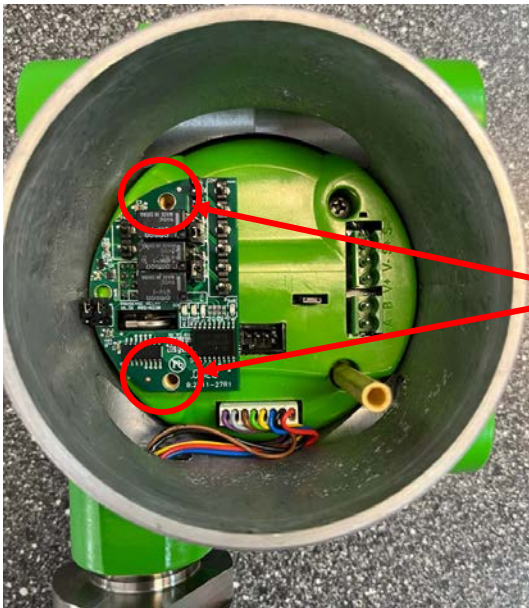
Relay mounting pin holes

- 6- Install relay module mounting pins to empty screw holes via using ¼" hexagonal screwdriver. It will be look like as below:



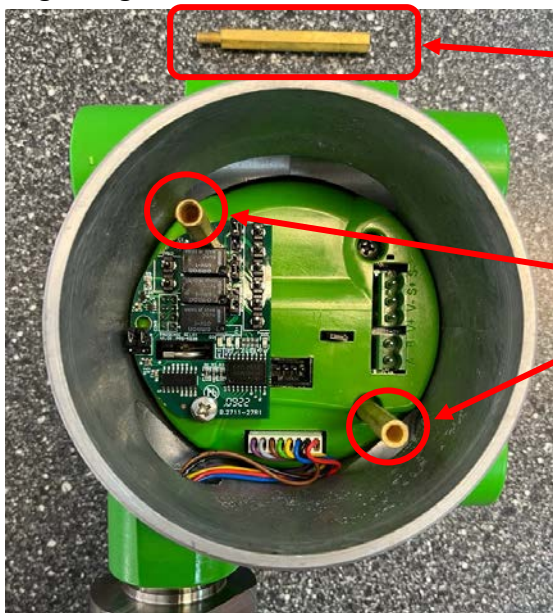
Relay mounting pins installed

- 7- Install relay module to relay connection terminal:



Relay module holes must exactly match with the mounting holes. Otherwise the connection pins will not match and relay module will not work.

- 8- Now install the screw removed from transmitter to same location. Also install the shorter display mounting pin to same location with longer one that removed at the beginning.



Longer display mounting pin will not be used any more.

Display mounting pins must be in same height to keep display correctly.

- 9- Install Display module to mounting pins.  
10- Power-on detector.  
11- Check the Relay module LEDs to see if it has been recognized by detector transmitter.  
12- Relay module has been recognized by transmitter and working fine if all LEDs are activated at power on and yellow LED start blinking during warm-up.  
13- Power-off detector.  
14- Complete cabling and connections to relay module. You must check details on PQ Series user manual for details.  
15- You can use test menu options to activate relays and check connected devices are activated correctly via switching outputs.  
16- Close detector lid when all necessary actions completed.

### References and Additional Information:

PROSENSE PQ Series Gas Detectors User and Safety Manual:

[https://www.prosense.com.tr/uploads/531-PQ\\_user%20manual\\_rev\\_R5.5.1.pdf](https://www.prosense.com.tr/uploads/531-PQ_user%20manual_rev_R5.5.1.pdf)