

Wear yellow. Work safe.

iERP: 126103

D5617/6 [English]

© BW Technologies 2008. All rights reserved.

Charger Specifications

Size: 8.6 x 8.2 x 7.8 cm (3.4 x 3.2 x 3.1 in.)

Weight: 97 g (3.4 oz)

Charger system ingress protection: IP20

Operating temperature: 10°C to 35°C (50°F to 95°F)

Humidity: 0% to 50%

Altitude: 2000 m (6561.66 ft.)

Power: 6 Vdc , 2.5 A

Charging LED: Color-coded LED advises: charging, charge complete, and charger fault.

Charge time: Typically 2-6 hours

Pollution degree: 2

Installation category: I

This device complies with the FCC Part 15 and ICES-003 Canadian EMI requirements. Operation is subject to the following two conditions:

- This device may not cause harmful interference, and
- This device must accept any interference received, including interference that may cause undesired operation.

This equipment has been tested and found to comply with the limits for a Class A digital device, pursuant to Part 15 of the FCC Rules and ICES-003 Canadian EMI requirements.

These limits are designed to provide reasonable protection against harmful interference when the equipment is operated in a commercial environment.

This equipment generates, uses, and can radiate radio frequency energy, and if not installed and used in accordance with the instruction manual, may cause harmful interference to radio communications.

Operation of this equipment in a residential area is likely to cause harmful interference in which case the user will be required to correct the interference at his/her own expense.

Warning

This product is designed for installation in an indoor location only. All required National Electrical Codes and Safety Standards must be followed.

For AC main installation, a circuit breaker should be included in the building installation as a disconnect device for the equipment. The disconnect device should be installed in close proximity to the equipment and the device should be marked as a disconnecting means for the equipment.

Specifications

The MicroDock II is for indoor use only.

Instrument dimensions: 21.2 x 26.3 x 8.2 cm
(8.3 x 10.4 x 3.2 in.) base station and one docking module

Weight: 0.98 kg (2.15 lb)

Base system ingress protection: IP20


Enclosure: Impact resistant PC/ABS (polycarbonate)

Operating temperature: +10°C to +35°C (+50°F to +95°F)

Humidity: 0 to 50%

Altitude: 2000 m (6561.66 ft.)

Storage temperature: -10°C to 60°C (14°F to 140 °F)

Power supply: 6 Vdc , 1.5 A wall adapter or four C-cell batteries
(be advised that the main supply voltage fluctuations are not to exceed 10% of the nominal supply)

Pollution degree: 2

Installation category: I

Real-time clock: Provides time and date stamp

Data storage: Automatic (instrument and base station)
128 MB Delkin MMC data storage system

External interface: USB interface for PC

Pump: DC motor, micro-diaphragm; 3V PCB mount

Flow rate: Maximum recommended 350 ml/min.

Calibration gas cylinder inputs:

2-gas inlets (standard)
4-gas + air inlets (maximum)

Automatic tests: Functional bump test, calibration, data transfer, audible alarm, visual alarm

Configuration recognition: Automatic (instrument and sensor)

Alarm/calibration parameters: User-settable

Calibration gas connections: Built-in (base station)

Gas connection: 1/8" SMC connect sub-miniature coupling

Solenoid: Built-in (docking modules)

LED indicators: (on each docking module)

Yellow – Test

Green – Pass

Red – Fail

Command keys:

Base station	Menu navigation
Docking module	One touch bump test initiation One touch calibration initiation (not applicable to the GasAlertClip Extreme) One touch data transfer initiation (GasAlert Extreme, GasAlertMicroClip, and GasAlertMax XT only)

Communications method: Infrared (two-way) between docking module and detector (not applicable to the GasAlertClip Extreme – one way communication only)

USB port for connection to a:

Personal computer (PC), or
USB over IP HUB

Sensors: Audio
Optical

LCD: 4 line x 16 characters, wide viewing angle, user selectable back-lighting

Warranty: 2 years

Replacement Parts and Accessories

⚠ Warning

To avoid personal injury or damage to the base station, use only the specified replacement parts.

To order parts or accessories, contact [BW Technologies by Honeywell](#).


Table 22. Replacement Parts and Accessories

Model Number	Description
GasAlertMicro Docking Module	
DOCK2-0-1A-00-N	Non-charging
DOCK2-0-1B1C-00-N	Charging (power supply included)
GasAlertMicro 5/PID/IR Docking Module	
DOCK2-0-1J-00-N	Non-charging
DOCK2-0-1C1K-00-N	Charging (power supply included)
GasAlert Extreme Docking Module	
DOCK2-0-1D-00-N	With datalogging
GasAlertClip Extreme Docking Module	
DOCK2-0-1E-00-N	H ₂ S (hydrogen sulfide)
DOCK2-0-1H-00-N	O ₂ (oxygen)
DOCK2-0-1G-00-N	CO (carbon monoxide)
DOCK2-0-1F-00-N	SO ₂ (sulfur dioxide)

Model Number	Description
GasAlertMicroClip Docking Module	
DOCK2-0-1C1L-00-N	Charging (power supply included)
GasAlertMax XT Docking Module	
DOCK2-0-1C1M	Charging (power supply included)
MMC/SD Communication Devices and Accessories	
CR-MMC-USB1	MMC USB Reader (USB port) for MMC
DOCK2-LAN1	Network USB communication device
MMC128-D	Delkin 128 MB MultiMediaCard (MMC)
Wall Mount Adapters	
WMA-DOCK	For MicroDock II and charging modules (kit of 2)
MK-CG2-34B	For 34 l gas cylinder (black)
MK-CG2-58	For 58 l gas cylinder (red)
Replacement Parts and Accessories	
DOCK2-DA-1	Diffusion adapter
Carrying Cases	
DOCK2-CC1	Hard-sided (1 module system)
DOCK2-CC2	Heavy duty (1 to 3 module system)
Demand Flow Regulators	
REG-DF1	Demand flow regulator
REG-DF2	For refillable cylinders CGA connector


MicroDock II
User Manual

Problem	Possible Cause	Solution
MMC Size Is Not Supported OK	Size of MMC is not supported.	Insert a 128 MB Delkin MMC
Error Formatting MMC Please Try Another Card OK	MMC is not correctly formatted.	Refer to Formatting the MMC/SD Card .
		Replace with a new MMC/SD card.
MMC Is Full OK	Log file has exceeded maximum size.	Refer to Formatting the MMC/SD Card .
		Replace with a new MMC/SD card.
Bay 1 IR Communication Not Working OK	IR not working when detector is inserted into the module.	Check for dirt on the IR port.
		Confirm the detector is activated.
		Charge the detector battery if too low.
Bay 1 Detector Not Supported OK	Non-datalogger detector is inserted in the docking module.	Insert only datalogger models.
Bay 1 Err. CO2 17 OK	Software exception.	If debug code displays on the LCD, record it and contact BW Technologies by Honeywell .

Problem	Possible Cause	Solution
The charger LED does not light when the detector is inserted (For GasAlertMicro, GasAlertMicro 5/PID/IR, GasAlertMicroClip, and GasAlertMax XT docking modules).	Detector is not inserted into the detector bay correctly.	Firmly insert the detector into the detector docking bay.
	The battery pack is above or below the operating temperature 50°F–95°F (10°C–35°C).	Allow the battery pack time to adjust to the specified operating temperature (approximately 60 minutes).
	The battery pack is severely depleted.	Allow the detector to charge (2–4 hours).
No drive letter is created for the MicroDock II (Windows XP) on the PC.	Windows XP is not correctly mapping the drive.	<p>Ensure Windows XP assigned a drive letter to the MicroDock II.</p> <p>Solution:</p> <ol style="list-style-type: none"> 1) Right-click My Computer and then click Manage. 2) Under Computer Management (Local) click Disk Management. 3) In the list of drives in the right pane, right-click the new drive and then click Change Drive Letter and Path(s). 4) Click Change and in the drop-down box, select a drive letter for the new drive (cannot be assigned to a mapped network drive). 5) Click OK and then click OK again.
	Problem transferring to the MMC/SD card during a calibration or bump test.	Repeat the test.
		Ensure the MMC/SD card is inserted.

MicroDock II
User Manual

Problem	Possible Cause	Solution
The docking module does not recognize the detector.	Detector is deactivated.	Activate the detector.
	Detector does not have IR communication capabilities.	Refer to the label located on the back of the detector for IR capabilities.
	Firmware of the detector requires an update.	Contact BW Technologies by Honeywell .
	Base station is currently attempting to establish communication with the detector.	Wait approximately 30 seconds.
	Docking module is not initialized to the correct number.	Re-initialize the docking module—refer to Adding Another Docking Module .
	Detector and/or base station are damaged or defective.	Contact BW Technologies by Honeywell .
There is an audible beep but no charge (GasAlertMicro and GasAlertMicro 5/PID/IR docking modules).	Battery is above or below the operating temperature 50°F–95°F (10°C–35°C).	Allow the battery pack time to adjust to the specified operating temperature (approximately 60 minutes).
	Severely depleted battery.	Charge (2–4 hours) or replace old battery with new battery. If problem persists, contact BW Technologies by Honeywell .
	Damaged or defective battery pack.	Contact BW Technologies by Honeywell .

Problem	Possible Cause	Solution
The oxygen sensor fails a bump test.	Oxygen alarm setpoints of the detector are set to the same concentration level as the gas cylinder.	Connect a quad-gas cylinder that has 18% O ₂ .
	Ambient air (inlet 1) is blocked or the inlet filter is contaminated.	Remove the blockage or replace the inlet filter.
	Zero gas cylinder is empty.	Use a new zero gas cylinder.
The detector fails a calibration.	Gas cylinder is empty.	Use a new gas cylinder.
	Barbed fittings are not connected correctly to the gasket.	Confirm connection. Refer to Adding Another Docking Module .
	Gas connections are not attached correctly or are blocked.	Confirm that all gas connections are attached correctly
	Detector and/or base station are damaged or defective.	Contact BW Technologies by Honeywell .
Flashing battery icon  .	Batteries are extremely depleted.	Replace the batteries.
The base station is activated but does not respond to button presses.	Irregular power (not continuous or reliable) electrostatic discharge.	Deactivate the base station, wait 5 seconds, then reactivate.
There is no audible beep (GasAlertMicro and GasAlertMicro 5/PID/IR).	Internal damage to battery or docking module.	Contact BW Technologies by Honeywell .

Troubleshooting

If a problem is encountered, refer to the solutions provided in the following table. If the problem cannot be resolved, contact [BW Technologies by Honeywell](#). [*Applicable to GasAlertMicro and GasAlertMicro 5/PID/IR docking modules only].

Table 21. Troubleshooting Tips

Problem	Possible Cause	Solution
The base station does not activate.	There is no power connection.	Connect the power adapter.
	Batteries are not inserted.	Insert the batteries.
	The batteries are depleted.	Replace the batteries.
	The base station is damaged or defective.	Contact BW Technologies by Honeywell .
The detector fails a bump test.	Barbed fittings are not connected correctly with the gasket.	Confirm connection. Refer to Adding Another Docking Module .
	Detector alarm setpoints are set higher than the gas concentration levels of the gas cylinder.	Connect a gas cylinder that has a higher gas concentration level than the alarm setpoints.
	Gas connections are not attached correctly or are blocked.	Confirm that all gas connections are attached correctly.
	Gas inlets are not setup correctly.	Refer to Inlet Setup and Installation .
	Gas cylinder is empty.	Use a new gas cylinder.
	Detector and/or base station are damaged or defective.	Contact BW Technologies by Honeywell .

4. Allow the battery to obtain a full charge (2 to 6 hours, depending upon detector type and number of docking modules connected to the base station).

If a docking module is in queue waiting charge, the CHARGE LED flashes red (all charging modules).

When the docking module begins charging, the CHARGE LED stops flashing and lights solid red.

The CHARGE LED lights green when the charging process is complete. If there are other docking modules in queue, waiting to charge, the docking modules will begin charging.

The CHARGE LED deactivates when the detector is removed.

Maintenance

⚠ Warning

No user-serviceable parts inside.

To maintain the base station in good operating condition, perform the following basic maintenance as required.

- To ensure quality product operation, maintain a log of all maintenance that is performed.
- Clean the exterior with a soft, damp cloth. Do not use solvents, soaps, or polishes.
- Confirm that the inlet filter is free of dirt and replace it if required. To order replacement parts, refer to [Replacement Parts and Accessories](#).
- Do not immerse the base station in liquids.

Battery Pack Storage

GasAlertMicro and GasAlertMicro 5/PID/IR

When storing for extended periods of time, ensure that the detector is fully charged and recharged every 30 days.

GasAlertMicroClip

If the GasAlertMicroClip will be stored for an extended period of time, ensure the detector is fully charged before storage and then recharged every 30 days. Calibration due dates may be lost if the detector is not recharged every 30 days.

MicroDock II User Manual

- When charging is complete, the battery pack may be warm.
- The battery pack requires approximately three charge cycles to achieve full charge capacity.
- The base station only charges using DC power.
- Charging more than four units simultaneously increases the total charge time.
- When charging an extremely depleted battery, the battery requires a longer charging time.
- The detector cannot charge during bump tests or calibrations. If battery power is low, charge the detector for 30 minutes and then initiate the bump/calibration.

⚠ Caution

Do not calibrate or bump the detector immediately after charging is complete. Allow 10 minutes before initiating.

- When a fully charged battery is inserted into the detector bay, the charger LED lights red for 6 to 10 minutes before lighting green. This action will not wear or damage the battery.

Charging Different Detectors Together

Up to six charging docking modules can be attached to the base station.

For any combination of GasAlertMicroClip or GasAlertMax XT charging docking modules with GasAlertMicro 5/PID/IR or GasAlertMicro docking charging modules, refer to the following:

- If another GasAlertMicroClip or GasAlertMax XT charging docking module is added, the added module will wait in queue until a GasAlertMicro 5/PID/IR or GasAlertMicro charging docking module has completed charging before beginning to charge.

- If another GasAlertMicro 5/PID/IR or GasAlertMicro charging docking module is added, the added module will begin charging and one GasAlertMicroClip or GasAlertMax XT charging docking module will stop charging. The GasAlertMicroClip or GasAlertMax XT charging docking module will begin charging when a GasAlertMicro 5/PID/IR or GasAlertMicro charging docking module has completed charging.

Charging Procedure

Table 20. Charger Status LED

Charger Status	Description
Red	Charging normally
Green	Charge complete
Off	Charge or temperature fault

To charge a detector in a charging docking module, complete the following:

1. Connect the AC adapter of the charger to the CHARGE port on the base station and then plug the cord into the AC outlet. The CHARGE STATUS LED briefly lights red then green during the self-test. The LED then deactivates.
2. Deactivate the detector and insert it into the charging cradle. The charging LED then lights red.
Ensure the detector is inserted correctly onto the contact pins.
3. The CHARGE LED lights red (all charging modules).

Accessing Test Results

To access and view test results using Fleet Manager II, refer to the *Fleet Manager II Operator's Manual*.

Data that is saved on the MMC/SD card can be transferred to a PC. MicroDock II test results are saved in the .CSV format.

PC Requirements

The following versions of the Microsoft Windows operating system supports Fleet Manager II:

- Windows XP

The computer must have the following minimum system requirements:

- 800 MHz processor
- 100 MB of free disk space
- 512 MB of RAM

The computer must also have the following software:

- A PDF reader

Note

BW recommends that bump tests and calibrations be completed before attempting to access results on the PC.

Charging the Battery Pack (Excluding GasAlert Extreme and GasAlertClip Extreme)**⚠ Warning**

There is a maximum of six charging docking modules that can be installed on the base station (six charging modules plus four non-charging modules for a maximum of ten docking modules per station).

To charge successfully, the temperature must be between 50°F to 95°F (10°C to 35°C). Charge the battery when the detector emits a low battery alarm.

⚠ Caution

The charger is for indoor use only.

When charging for the first time, refer to the detector's user manual or operator's manual.

Note

The detector will not charge while bump tests or calibrations are being performed. If the battery is low, charge the detector for 30 minutes then begin a test. When the test is complete resume charging the battery.

Charger/Battery Pack Guidelines

- Deactivate the detector before charging.
- When charging is complete, the detector can remain in the detector bay without wear or damage to the battery.
- Charging the battery pack in temperatures above 86°F (30°C) greatly reduces the number of possible charges to the battery pack.

Base Station MMC/SD Card

Event Logging

Bump tests and calibrations are recorded on a MultiMediaCard (MMC) or a Secure Digital (SD) card. The MMC/SD card is located in the base station inside the battery compartment. It stores test records that are then downloaded from the base station to a PC.

The following detectors transfer event logs to the base station MMC during a bump test or calibration:

- GasAlertClip Extreme (bump test only)
- GasAlert Extreme
- GasAlertMicroClip
- GasAlertMax XT

Inserting/Replacing a MMC/SD Card

The MMC/SD card is inserted in the base station inside the battery compartment. To insert or replace the MMC/SD card, refer to Figure 22 and complete the following procedures:

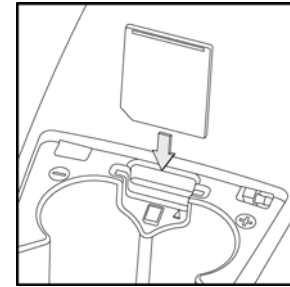


Figure 22. Replacing a MMC/SD Card

1. Deactivate the base station.
2. Loosen the retaining screws from the battery cover. Do not remove the screws from the battery cover.
3. Remove the battery cover and set it aside.
4. Remove the current MMC/SD card (if applicable).
5. Insert the new MMC/SD card into the memory card slot.
6. Replace the battery cover and tighten the retaining screws. Do not overtighten the screws.

To format an MMC/SD card, refer to [Formatting the MMC/SD Card](#) in the [User Options Menu](#) section.

- **Reprogram with user’s consent (including Date/ Time):** When selected, the base station asks if the detector will be reconfigured each time a bump check or calibration is initiated. The detector’s clock will be changed to match the MicroDock II’s clock.
 - **Automatically reprogram (including Date/Time):** When selected, the detector is automatically reconfigured when a bump test or calibration is initiated. The detector’s clock is changed to match the MicroDock II’s clock.
8. Ensure the base station is connected to the computer using a USB cable.
 9. Click **Save** in the lower left-hand corner.
 10. The Save Configuration dialog box displays.

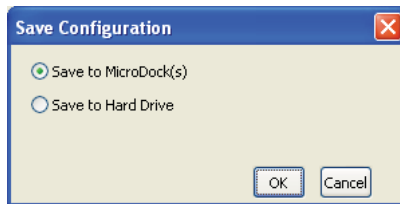


Figure 20. Save Configuration Dialog Box

11. Click the **Save to MicroDock(s)** checkbox and click **OK**.
The Save to MicroDock(s) dialog box displays.

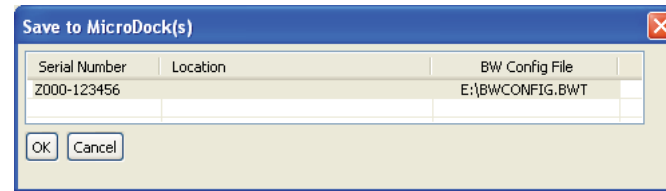
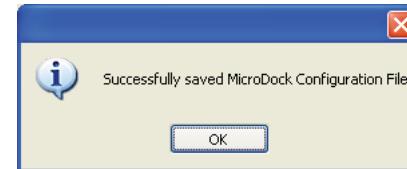


Figure 21. Save to MicroDock(s) Dialog Box

12. Select a MicroDock II to save the configuration file and click **OK**.
The following dialog box displays.



13. Click **OK**.
14. Refer to [Reconfiguring the Detector \(not applicable to the GasAlertClip Extreme\)](#) to download the new configuration to the detector.

MicroDock II User Manual

5. On the base station, press  Pass to return to the normal operating screen.

Note

A maximum of ten datalogs from all modules combined can be stored on an MMC/SD card (100 datalogs for GasAlertMicroClip and GasAlertMax XT).

When the maximum storage is reached, the base station replaces the oldest datalogs with the newest datalogs. Datalogs are not recorded in the [Results History](#).

Automatic Datalog Download (GasAlertMicroClip and GasAlertMax XT only)

The detector can be configured to automatically transfer datalogs every time a bump test or calibration is performed.

Using the IR Link

To configure the GasAlertMicroClip using the IR Link and Soft Tools, refer to the *GasAlertMicroClip User Manual* and *GasAlertMicroClip Soft Tools Manual*.

To configure the GasAlertMax XT using the IR Link, refer to the *GasAlertMax XT Technical Reference Guide*.

Using the MicroDock II

To enable Automatic Datalog Download using MicroDock II and Fleet Manager II, complete the following:

1. From the PC, open Fleet Manager II.
2. Log in to the Administration functions.

3. From the **Devices** toolbar, click **Configure Devices via MicroDock**.

The Load Configuration File dialog box displays.

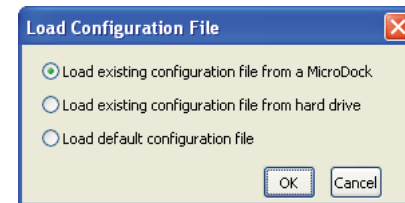


Figure 19. Load Configuration File Dialog Box

4. Select an option and click **OK**.
5. Click the desired detector tab.
6. Under **Testing Options**, click **Automatic Datalog Download**.
7. Under program options, select an option to reprogram the detector.
 - **Reprogram with user's consent (but do not change Date/Time):** When selected, the base station asks if the detector will be reconfigured each time a bump check or calibration is initiated. The detector's clock is not changed to match the MicroDock II's clock.
 - **Automatically reprogram (but do not change Date/Time):** When selected, the detector is automatically reconfigured when a bump test or calibration is initiated. The detector's clock is not changed to match the MicroDock II's clock.


Data Transfer *(GasAlert Extreme, GasAlertMicroClip, and GasAlertMax XT only)*

Transferring Datalogs

The data transfer function transfers datalogs from the detector to the base station's MMC/SD card. The data can then be imported into Fleet Manager II.

Depending upon the amount of information stored in the detector, the transfer of data may require 12-14 minutes (1-2 minutes for GasAlertMicroClip and GasAlertMax XT) to complete.

To transfer datalogs from the detector to the docking module and then to the base station MMC/SD card, complete the following:

1. Activate the detector and wait until it is in normal operation. Insert it into the docking module.
2. Activate the base station and wait until it is in normal operation.
3. Press  DATA TRANSFER on the docking module. The yellow RUN LED flashes rapidly and the docking module begins to transfer the datalogs to the base station.

When the transfer process is complete, the docking module indicates the status of the transfer as PASS or FAIL.

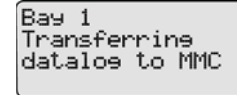
Successful Transfer: If the datalog transfer is successful, the PASS LED lights green, the RUN LED flashes yellow slowly, and the detector beeps.

Unsuccessful Transfer: If the datalog transfer is unsuccessful, the FAIL LED lights red and the RUN LED flashes slowly.

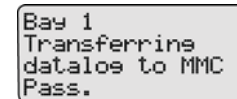
If a failure occurs during the transfer of a datalog, typically some of the data transfers to the MMC/SD card. To determine if any data has been transferred, access the MMC data using Fleet Manager II. Refer to the Fleet Manager II Operator's Manual.

If required, repeat step #3 to transfer the datalog.

4. After a successful transfer to the base station, the base station transfers the datalog to the MMC/SD card. The RUN and the PASS LEDs light on the docking module and the following screen displays on the base station LCD.



When the datalog has successfully transferred from the base station to the MMC/SD card, the following screen displays on the base station LCD.



MicroDock II User Manual

Incorrect Inlet Setup

If an inlet is not setup correctly during a calibration, the base station displays **Fail** and a hyphen (—) beside the gas type.

```
Bay 1 AUD√ SO2√  
CAL VIS√ H2S—  
Fail CO — LEL—  
OK O2 √
```

Example: H₂S, CO, and LEL gases were not detected.

If a test gas fails, verify that the

- gas cylinder is not empty,
- connections are attached correctly, and
- inlets are setup correctly.

If the detector fails an audible or visual test fails, ✘ displays beside the applicable test (**AUD** or **VIS**). For information regarding solutions, refer to [Troubleshooting](#).

Sensor Disabled

⚠ Warning

To prevent personal injury and/or property damage, replace the sensor immediately. Refer to the corresponding detector user manual for sensor replacement procedures.

If a sensor is disabled, results from the sensor do not display on the base station LCD. — displays where the gas type typically displays on the LCD.

```
Bay 1 AUD√ SO2√  
CAL VIS√ —  
Pass — —  
OK O2 √
```

Note

If a sensor is disabled, it will not be recorded in the results log.

- The base station then purges the N₂ before applying the CO₂ gas.

```
1 Purge
  020.9 %
  Applying Gas....
```

- The base station then applies the gas to the CO₂ sensor.

```
4 CO2
  5000 PPM
  Applying Gas....
```

- The base station then begins calibrating the remaining sensors. For more information, refer to [Automatic Datalog Download \(GasAlertMicroClip and GasAlertMax XT only\)](#).
- After calibration is complete, the base station displays the results and performs a final purge to clear any remaining gas.

```
Bay 1 AUD ✓ O2 ✓
Bump VIS ✓ CO ✓
Pass H2S ✓
Purge 022 LEL ✓
```

The countdown of seconds remaining displays beside **Purge**.

Note

After calibration, the GasAlertMicro 5/PID/IR automatically deactivates. To bypass the automatic shutdown, remove the detector within 15 seconds after the final purge begins.

Calibration Results

After the calibration is complete, the base station LCD displays the results.

✓	Pass
✗	Fail
H2S---	No gas found (H ₂ S is used as an example, this applies to all gases)
---	Sensor is disabled

Calibration Pass

```
Bay 1 AUD ✓ SO2 ✓
CAL VIS ✓ H2S ✓
Pass CO ✓ LEL ✓
OK 02 ✓
```

✓ and **Pass** indicates that the calibration has passed. The detector is now ready for use. Press **OK** to return to normal operation.

Calibration Fail

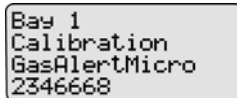
```
Bay 1 AUD ✓ SO2 ✓
CAL VIS ✓ H2S ✗
Fail CO ✓ LEL ✓
OK 02 ✓
```

If calibration fails, ✗ displays beside the applicable gas.

Example: H2S✗

The base station begins the calibration and displays the

- docking module,
- test being performed,
- detector type, and
- detector serial number.



```
Bay 1
Calibration
GasAlertMicro
2346668
```

Note

The GasAlertMicro 5/PID/IR beeps and flashes two times when calibration begins, and the GasAlertMicroClip and GasAlertMax XT beeps and flashes once.

⚠ Important

If the Automatic Datalog Download (GasAlertMicroClip and GasAlertMax XT only) is enabled in Fleet Manager II, data transfer automatically begins during the purge. Do not remove the detector until the DATA TRANSFER PASS LED lights, otherwise the transfer will fail.

5. If there is a gas conflict or a selected gas cannot be found, refer to [Gas Conflicts](#).
6. If there are no gas conflicts, the base station then applies the gas.



```
2 O2
000.0
Applying Gas...
```

If more than one gas is being applied, the base station performs a purge between each gas. Depending upon the gas type, the purge time(s) will vary.

Note

*If **Automatic Datalog Download** is enabled in Fleet Manager II, the GasAlertMicroClip and GasAlertMax XT automatically deactivate after the transfer is complete. To bypass the shut-down, remove the detector within 15 seconds after the DATA TRANSFER PASS LED lights.*

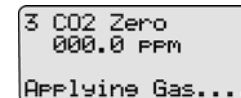
7. Refer to [Calibration Results](#).

GasAlertMicro 5 IR with CO₂ Sensor

Note

If calibrating a GasAlertMicro 5 IR detector, the base station automatically zeroes and then calibrates the CO₂ sensor first.

1. The base station zeroes the CO₂ sensor. The CO₂ sensor can only be zeroed using nitrogen (N₂).
Ensure N₂ has been configured to an inlet. If required, refer to [Inlet Setup](#).
2. The base station applies the gas.



```
3 CO2 Zero
000.0 PPM
Applying Gas....
```

- Calibrate a new sensor before use. Allow the sensor to stabilize before starting calibration:
 - Used sensor: 60 seconds
 - New sensor: 5 minutes.
- Before calibrating a new NO or ETO sensor, allow the sensor to stabilize for 2 hours in a safe area that is free of gas.
- Calibrate the sensors at least once every 180 days, depending upon use and sensor exposure to poisons and contaminants. For HCN sensors, calibrate at least once every 90 days.
- Calibrate the sensor before changing the alarm setpoints.
- When calibrating multiple times, wait 10 minutes between calibrations to allow the sensor to stabilize.
- If a certified calibration is required, contact [BW Technologies by Honeywell](#).

Calibration Procedure (All models excluding the GasAlertClip Extreme)

A calibration adjusts the sensitivity level of a sensor to ensure an accurate response to gas.

⚠ Caution

Ensure the detector is not in a low battery state prior to performing a calibration.


The base station automatically accepts an unusually large span adjustment notification for the GasAlertMicro 5/PID/IR. Refer to the *GasAlert-Micro 5/PID/IR User Manual*.


The following detectors transfer their event logs to the base station MMC during a or calibration:

- GasAlert Extreme
- GasAlertMicroClip
- GasAlertMax XT

To perform a calibration, complete the following:

1. Ensure the MMC/SD card is inserted if datalogging is required.

If the MMC/SD card is not inserted,  displays on the LCD when the base station attempts to log the results of the calibration. If required, refer to [Inserting/Replacing a MMC/SD Card](#).

2. Activate the detector and wait until it is in normal operation. Insert it into the docking module.
3. Activate the base station and wait until it is in normal operation.
4. Press  CALIBRATION on the corresponding docking module.

Note

For calibration procedures for the GasAlertMicro 5 IR with CO₂ sensor, refer to GasAlertMicro 5 IR with CO₂ Sensor

If calibration is initiated while in the user options menu: Calibrations are initiated after exiting the user options menu.

If more than one docking module is queued: If more than one docking module is queued for calibration, the first module queued begins the calibration.

The RUN LED flashes yellow on the remaining docking modules that are queued for calibration. When the first docking module is complete, the next module in the queue begins calibration.

Calibration

Guidelines

Caution

If adjustments are made to the real-time clock, the calibration due date will be invalid for the

- **GasAlert Extreme,**
- **GasAlertMicro,**
- **GasAlertMicro 5/PID/IR,**
- **GasAlertMicroClip,**
- **GasAlertMax XT detectors.**

Recalibrate the detector immediately.

When calibrating the sensors, adhere to the following guidelines:

- Recommended gas mixture:
 - O₂: clean air, 18% vol.
 - CO: (low H₂ sensitivity): 50 to 500 ppm balance N₂
 - CO: 50 to 500 ppm balance N₂
 - H₂S (high range): 10 to 100 ppm balance N₂
 - H₂S (low methanol): 10 to 100 ppm balance N₂
 - H₂S: 10 to 100 ppm balance N₂
 - PH₃: 1 to 5 ppm balance N₂
 - SO₂: 10 to 50 ppm balance N₂
 - NH₃: 20 to 100 ppm balance N₂
 - NH₃: (high range) 20 to 100 ppm balance N₂
 - NO₂: 5 to 50 ppm balance N₂
 - HCN: 5 to 20 ppm balance N₂

ETO: 5 to 50 ppm balance N₂
NO: 10 to 250 ppm balance N₂
Cl₂: 3 to 25 ppm (for bump checks only)
VOC: 100 ppm isobutylene
CO₂: 5000 ppm balance air or 0-5.0 % v/v CO₂
LEL: 10 to 100% LEL or 0.5 to 5% by vol. methane balance air

- Calibrate only in a clean atmosphere that is free of background gas. Do not operate the base station in a hazardous area. Failure to adhere to this guideline can result in possible personal injury and/or property damage.
- BW recommends using premium grade calibration gases and cylinders that are certified to National Standards. The calibration gases must meet the accuracy of the detector.
- Do not use a gas cylinder beyond its expiration date.
- All calibration cylinders must be used with a demand flow regulator and must meet the following maximum inlet pressure specifications:
 - Disposable cylinders 0-1000 psig/70 bar
 - Refillable cylinders 0-3000 psig/207 bar
- Do not calibrate the detector during or immediately after charging is complete.
- For ETO sensors (before each work shift) allow the detector to fully stabilize in the temperature that it will be operated in, and then zero the detector.
- It is necessary to periodically re-zero the ETO sensor.
- Calibrate the sensor if the ambient gas display varies during start-up.

If the detector fails an audible or visual test, ✘ displays beside the applicable test (**AUD** or **VIS**). For information regarding solutions, refer to [Troubleshooting](#).

Note

If a gas type fails, calibrate the detector prior to use.

Confirm that the gas concentration exceeds the low alarm setpoint of the detector being tested (applicable to GasAlertMicro 5/PID/IR, GasAlertMicroClip, and GasAlertMax XT only).

Incorrect Inlet Setup

If an inlet is not setup correctly, a hyphen (—) displays beside the gas type.

Bay 1	AUD✘	SO2—
Bump	VIS✘	H2S✘
Pass	CO—	LEL—
OK	O2	—

Example: SO₂, CO, LEL, and O₂ gases were not detected.

If a test gas fails, verify that the

- gas cylinder is not empty,
- connections are attached correctly,
- inlets are setup correctly, and
- gas concentration exceeds the low alarm setpoint (applicable to GasAlertMicro, GasAlertMicro 5/PID/IR, GasAlertMicroClip, and GasAlertMax XT detectors).

Sensor Disabled

⚠ Warning

To prevent personal injury and/or property damage, replace the sensor immediately. Refer to the corresponding detector user manual or technical reference guide for sensor replacement procedures.

If a sensor is disabled, results from the sensor do not display on the base station LCD. — displays where the gas type typically displays on the LCD.

Bay 1	AUD✓	SO2✓
Bump	VIS✓	—
Pass	—	—
OK	O2	✓

Note

If a sensor is disabled, it is not recorded in the results log.

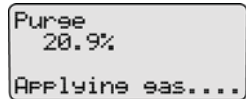
MicroDock II
User Manual

If more than one gas is being applied, the base station performs a purge between each gas. Depending upon the gas type, the purge time(s) will vary.

⚠ Important

If the Automatic Datalog Download (GasAlertMicroClip and GasAlertMax XT only) is enabled in Fleet Manager II, data transfer automatically begins during the purge. Do not remove the detector until the DATA TRANSFER PASS LED lights, otherwise the transfer will fail.

For more information, refer to [Automatic Datalog Download \(GasAlertMicroClip and GasAlertMax XT only\)](#).



- After the bump test is complete, the base station displays the results of the bump test and performs a final purge to clear any remaining gas.



The countdown of seconds remaining displays beside **Purge**.

Note

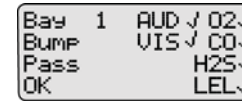
After a bump check is performed, the GasAlertMicro, GasAlert-Micro 5/PID/IR, GasAlertMicroClip, and GasAlertMax XT deactivate in 5 minutes if no activity is detected.

Bump Test Results

After the bump test is complete, the base station displays the results of the test.

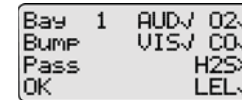
✓	Pass
✗	Fail
H2S —	Gas type not detected (H ₂ S is used as an example, this applies to all gases)
—	Sensor is disabled

Bump Pass



✓ indicates that the detector passed the bump tests. The detector is now ready for use. Press **OK** to return to normal operation.

Bump Fail



If the detector failed a bump test, ✗ displays beside the applicable gas

Example: H2S ✗.

To reconfigure the detector, press **Yes**. The MMC/SD card then transfers the new configuration data to the detector. If required, refer to [Reconfiguring the Detector \(not applicable to the GasAlertClip Extreme\)](#).

Or

Press **No** to continue with the bump test.

Note

*If a selection is not made within 15 seconds, the base station automatically defaults to the **No** selection and proceeds with the bump test.*

6. The base station begins the bump test and displays the

- docking module number,
- test being performed,
- detector type, and
- detector serial number.

```
Bay 1
Bump Checking
GasAlertMicro
4577587
```

Note

The serial number of the GasAlertClip Extreme does not display on the base station when performing a bump test.

The GasAlertMicro 5/PID/IR beeps and flashes twice to test the sensors when the bump check begins.

7. If there is a gas conflict or a selected gas cannot be found, the gas conflicts screen displays.

```
Bay 1 Gas Select
0: Conflicts
1: Unresolved
more      cancel
```

Gas conflicts must be resolved to continue the bump test. Refer to [Gas Conflicts](#).

If there are no gas conflicts, the base station then applies the gas.

```
2 O2
000.0
Applying Gas...
```

Bump Test

A bump test is performed to confirm that the detector is responding to gas, and that the audio and visual alarms are operational.

The following detectors transfer their event logs to the base station MMC during a bump test:

- GasAlertClip Extreme
- GasAlert Extreme
- GasAlertMicroClip
- GasAlertMax XT

Caution


Ensure the detector is not in a low battery state prior to performing a bump test.

Note


If the GasAlertMicro, GasAlertMicro 5/PID/IR, GasAlertMicro-Clip, or GasAlertMax XT will be reconfigured, reconfiguration must be completed prior to performing a bump test. Refer to [Reconfiguring the Detector \(not applicable to the GasAlertClip Extreme\)](#).

To perform a bump test, complete the following:

1. Ensure the MMC/SD card is inserted if datalogging is required.

If the MMC/SD card is not inserted,  displays on the LCD when the base station attempts to write results to the MMC/SD card. If required, refer to [Inserting/Replacing a MMC/SD Card](#).

2. Activate the detector and wait until it is in normal operation. Insert it into the docking module.

3. Activate the base station and wait until it is in normal operation.
4. From the docking module, press  BUMP CHECK. The RUN LED lights yellow.

If a bump test is initiated while in the user menu: Bump tests are initiated after exiting the user options menu.

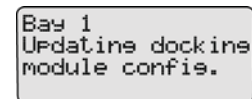
When the base station enters normal operation, the base station automatically begins the bump test.

If more than one docking module is queued: If more than one docking module is queued for a bump test, the first docking module queued begins the bump test.

The RUN LED flashes yellow on the remaining docking modules that are queued for a bump test. When the first module is complete, the next module in the queue begins the bump test.

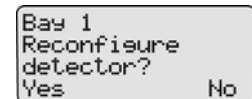
5. Depending upon the type of detector, the option to reconfigure is provided.

If the detector was reconfigured without user's consent, the following screen displays.



```
Bay 1
Updating dockins
module confie.
```

If the detector was reconfigured with user's consent the following screen displays.



```
Bay 1
Reconfigure
detector?
Yes      No
```

Table 19. Gas Application Rules

Rule #	Gas Type	Apply	Exception(s)
1	PH ₃	First	Two exceptions: NO ₂ and O ₃
2	HCN	First	Three exceptions: PH ₃ and ClO ₂
3	NO ₂	First	Three exceptions: HCN
4	H ₂ S	Last	One exception: PID
5	CO	Last	One exception: PID
6	COSH (H ₂ S/CO)	Last	One exception: PID
7	PID	Last	No exceptions
8	Toxic gas		Both toxic sensors are cross sensitive to each other – wait 5 minutes (minimum) between calibrations before verifying sensors.
9	2nd Toxic gas		Wait 5 minutes (minimum) after the second toxic gas is applied before verifying calibration. Verify calibration: Apply the same test gas from a different cylinder to ensure the calibration is successful.
10	Cross gas		Must perform individual calibrations to avoid incorrect calibration from cross gas
11	H ₂ S/PH ₃		H ₂ S contaminates PH ₃ – calibrate and verify PH ₃ sensor prior to applying any quad gas

Table 18. Gas Type Application Table

Gases	H₂S	CO	Cl₂ (Bump only)	NH₃	HCN	NO₂	COSH (H₂S/CO)	SO₂	PH₃	PID
H₂S		Quad gas	Cl ₂ Rule 4	NH ₃	HCN	NO ₂	quad gas - one step calibration	SO ₂	PH ₃ Rule 11	H ₂ S
CO			Cl ₂ Rule 5	NH ₃	HCN	NO ₂	quad gas - one step calibration	SO ₂	PH ₃ Rule 11	CO
Cl₂ Bump only				NH ₃ Rule 9	HCN	NO ₂ Rules 8 & 10	Cl ₂ Rule 6	Cl ₂ Rule 9	PH ₃ Rule 9	Cl ₂
NH₃					HCN Rule 9	NO ₂	NH ₃ Rule 6	NH ₃ Rule 9	PH ₃ Rules 9 & 10	NH ₃
HCN						HCN	HCN Rule 6	HCN Rules 8 & 10	PH ₃ Rules 8 & 10	HCN
NO₂							NO ₂ Rule 6	NO ₂	NO ₂ Rule 1	NO ₂
COSH H ₂ S/CO								SO ₂ Rule 6	PH ₃ Rules 10 & 11	COSH H ₂ S/CO
SO₂									PH ₃ Rules 9 & 10	SO ₂
PH₃										PH ₃
PID										

Order of Gases Applied for Bump Tests and Calibrations

⚠ Warning

It is extremely important that gases are applied in the order that is specified in this manual.

Failure to adhere to the rules in [Table 18](#), and [Table 19](#), of this manual will result in incorrect sensor readings and possible personal injury and/or property damage.

Note

Manual application of gas types is available for the GasAlertMicro 5/PID/IR detectors only.

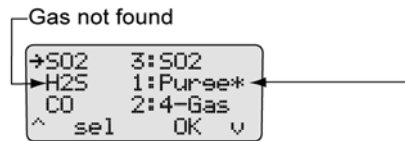
To manually apply gases for bump tests and calibrations, complete the following:

1. Review [Table 18](#), and [Table 19](#).
2. Determine which gases will be applied.
3. Using [Table 18](#), locate the first gas type (sensor) to be bump tested or calibrated on the top row.
4. Within the far left column, locate the next gas type (sensor) to be bumped or calibrated.

The square where the column and row intersect will indicate which gas should be applied first and a rule number (if applicable).

5. Using [Table 19](#), locate the corresponding rule number. Ensure that the desired order to apply gases corresponds to the gas application rules.
6. Continue to reference [Table 18](#), and [Table 19](#), to ensure the gases will be applied in the correct order.
7. When the correct order is determined, proceed to the [Bump Test](#) or [Calibration](#) section.

The gases display.



* displays on the row of the gas not found and indicates the inlet the station has selected

✱ displays on the far right side of the gas that cannot be found. The base station automatically defaults to the **Purge** inlet.

2. Press **OK** to accept the default Purge inlet.

Or

Press **sel** to select a different inlet.

Note

*For gases not found: If sel is not pressed within 30 seconds, the base station automatically defaults to the **Purge** inlet.*

3. If required, repeat steps #1-2 for any additional gases not found and confirm the following:
 - Ensure that the selected inlet is correct.
 - Ensure that the gas cylinder attached to the selected inlet is correct.
 - Press **OK** to accept the base station's default selection.

Accessing the MMC/SD Card During a Test

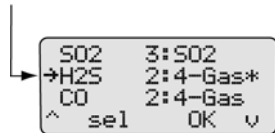
If an attempt is made to access the MMC/SD card on the base station from a PC while a bump test or calibration is being performed, the following screen displays.



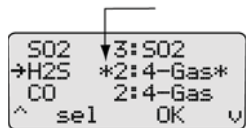
Note

BW recommends that bump tests and calibrations be completed before attempting to access test results from the PC.

2. Press or to move **➔** to the gas that is in conflict.



3. Press to access the inlet field. The **✚** automatically displays on the left side of the inlet.



4. Press or to scroll to the desired inlet (1-5).
5. When the required inlet value displays, press to confirm the selection and exit the field. The **✚** no longer displays to the right of the inlet indicating the conflict has been resolved.

Note

If is not pressed within 30 seconds, the base station automatically defaults to the inlet it has selected.

Unsuccessful Conflict Resolution: If the conflict is not resolved by selecting a different inlet, refer to the following:

- Ensure that the selected inlet is correct.
- Ensure the gas cylinder that is attached to the selected inlet is correct.
- Press to accept the base station's default selection.

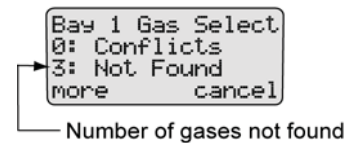
Not Found

If a value of **1** or more displays before **Not Found**, the base station is unable to locate the required gas type for a specific sensor on the detector.

Press to exit the gas conflict screen and return to normal operation. A bump test or calibration will not be performed.

To define the gas inlets, complete the following.

1. Press in the gas conflicts screen to access the gas type/inlet screen to view which gas type(s) cannot be found.

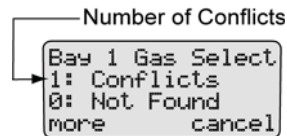


MicroDock II
User Manual

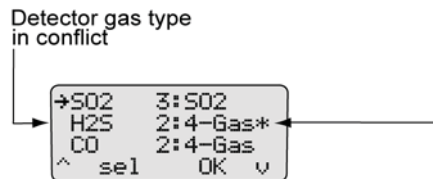
Base Station Selects the Gas Inlet

To resolve a conflict automatically, complete the following steps.

1. Press **more** in the gas conflicts screen to access the gas type/inlet screen to view which gas is configured for more than one inlet.



The gases display.



* displays on the row of the gas in conflict and indicates the inlet the station has selected

✚ displays on the far right side on the row of the gas that is setup for more than one inlet. The ✚ also indicates the inlet that the base station has selected as the optimum inlet.

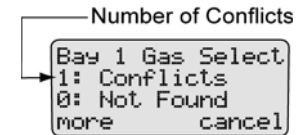
2. Press **OK** to accept the inlet that is selected and automatically resume the bump test or calibration.

Note

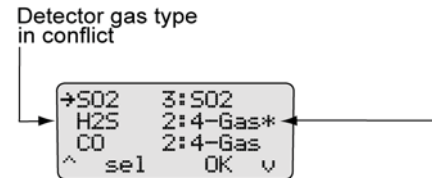
If **sel** is not pressed within 30 seconds, the base station automatically defaults to the inlet it has selected.

User Selects Gas Inlet

1. Press **more** in the gas conflicts screen to access the gas type/inlet screen to view which gas is configured for more than one inlet.

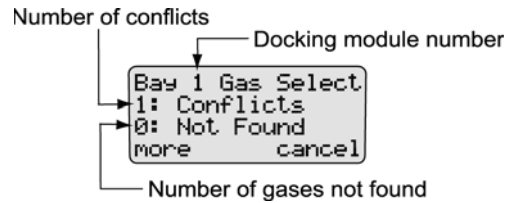


The gases display.



* displays on the row of the gas in conflict and indicates the inlet the station has selected

If a gas conflict is detected by the base station, the gas conflicts screen automatically displays.



Refer to the following sections, [Conflicts](#) and [Not Found](#). Before proceeding to resolve gas conflicts, refer to the following section [Abort Option](#).

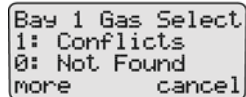
Abort Option

The **Abort** option is located in the gas conflicts screen. Selecting **Abort** exits the gas conflict function and the base station returns to normal operation. A bump test or calibration will not be performed.

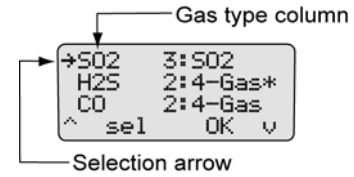
Proceed to the user options menu and select the **Inlet Setup** option.

To abort a gas conflict, complete the following:

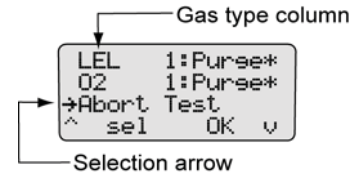
1. From the gas conflicts screen, press **more**.



2. The conflicts/not found screen displays.



3. Press **↕** or **↕** to scroll to the **Abort Test** option.



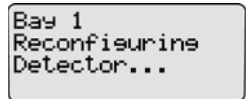
4. When **→** displays beside **Abort Test**, press **sel** or press **OK**. The base station automatically exits the gas conflict and returns to the normal operation.

Conflicts

If a conflict occurs, it must be resolved to continue the bump test or calibration. The user may select the gas inlet or accept the gas inlet suggested by the base station.

Press **cancel** to exit the gas conflict screen and return to normal operation. A bump test or calibration will not be performed.

20. **Successful Reconfiguring:** If reconfiguration is successful, the following screen displays.



Bay 1
Reconfiguring
Detector...

Unsuccessful Reconfiguration: If reconfiguration is not successful, the following screen displays.



Bay 1
IR Interruption
Test Aborted
ok

Press . The LCD then returns to normal operation.

Resolving IR Errors: Refer to the following solutions. If the following solutions do not resolve the IR error, refer to [Troubleshooting](#).

- Check the lighting conditions. Infrared or intense light (sunlight or halogen) can cause IR disruptions.
- Remove and reposition the detector in the docking module.
- Communication between the detector and base station may have been temporarily disrupted. Complete the procedures again.

Gas Conflicts

When performing a bump test or calibration, gas must be applied in a specific order to prevent gas conflicts that can damage the detector's sensor(s).

Note

Ensure that the gas inlets are configured correctly. Refer to [Inlet Select](#).

The gas conflicts screen automatically displays if a gas conflict occurs when a bump check or calibration is initiated.

There are two types of gas conflicts:

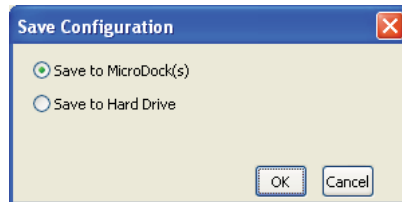
- **Conflicts:** More than one inlet is configured for a specific gas type.
Example: Inlet 2 is configured for SO₂ and inlet 3 is configured for the 3-gas SO₂ mix.
- **Not Found:** The base station is unable to locate the required gas type for a specific sensor on the detector.

The base station displays additional information regarding the

- number of gas conflicts,
- number of gases not found,
- docking module (e.g., **Bay 1**),
- detector gas type(s),
- inlet, and
- inlet gas type(s).

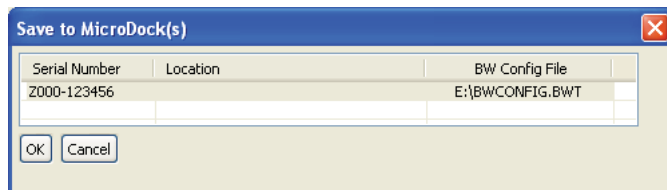
Reconfiguring the Detector (not applicable to the GasAlertClip Extreme)

14. When the configuration is complete, click **Save**. The Save Configuration dialog box displays.



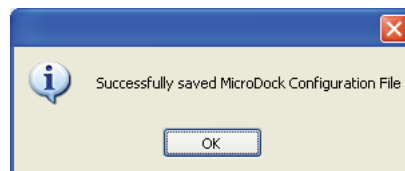
15. Select **Save to MicroDock(s)**

The Save to MicroDock(s) dialog box displays.



16. Select a MicroDock II to save to and click **OK**.

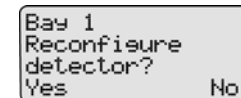
17. A dialog box displays the message **Successfully saved MicroDock Configuration File**. Click **OK**.



The detector configuration will be updated when the detector is inserted into the docking module, and a bump test or calibration is initiated.

18. To reconfigure the detector, from the base station press **BUMP CHECK** or **CALIBRATION**.

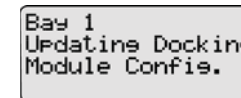
If **Reprogram with user's consent** was selected under Program options, **Reconfigure detector?** displays on the base station LCD.



Press **Yes** to reconfigure the detector and proceed to the bump test or calibration.

Press **No** to bypass reconfiguration and proceed to the bump test or calibration.

19. When the base station is reconfiguring the detector, the following screen displays on the base station LCD.



Reconfiguring the Detector (not applicable to the GasAlertClip Extreme)

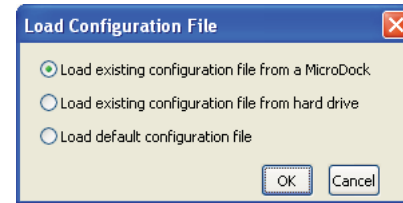
Fleet Manager II can reconfigure the following detectors with the base station:

- GasAlert Extreme
- GasAlertMicro
- GasAlertMicro 5/PID/IR
- GasAlertMicroClip
- GasAlertMax XT

The detector can be reconfigured prior to performing a bump test or calibration.

To reconfigure a detector, complete the following:

1. Activate the base station. Ensure it is in normal operation.
2. Ensure that a correctly formatted MMC/SD card is inserted in the base station. Refer to [Inserting/Replacing a MMC/SD Card](#).
3. Connect the USB cable to the computer and to the USB port on the base station.
4. Activate the detector and wait until it is in normal operation.
5. Insert the detector into the detector bay.
6. From the computer, open Fleet Manager II.
7. Login to the Administration functions.
8. Under the Devices tab, click **Configure Devices**.
9. The Load Configuration File dialog box displays.



Select one of the following options:

- **Load existing configuration file from a MicroDock**
- **Load existing configuration file from hard drive**
- **Load default configuration file**

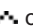
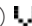
10. The Device Configuration dialog box displays.

11. Select which device to configure by clicking its tab.



12. Configure the device.

Ensure the **Updatable checkbox** is checked.

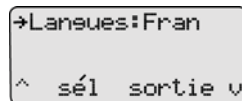
13. Select a program option that will reprogram the detector. Each detector's configuration screen has different reprogram options. Refer to Configuring Detectors in the *Fleet Manager II Operator's Manual*.

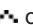

3. Press  or  to scroll to the different language options.
The available options are

- **Eng** (English),
- **Fran** (French),
- **Deut** (German),
- **Port** (Portuguese), and
- **Espa** (Spanish).

4. When the desired language displays, press **sel** to confirm the selection and exit the field ( changes back to ).

The LCD now displays all of the text in the selected language.



5. Press  or  to scroll to another user option
Or

Press **exit** to return to normal operation.

Note

exit will now displays in the selected language.

Results History

The results history displays the results of the last 10 bump tests or calibrations.

The results display from the newest result first. The following test errors can occur:

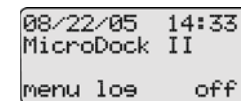
- **Unit removed**
- **MMC error**
- **IR error**

Note

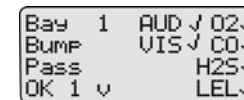
Deactivating hte base station erases the results history log.

To view the results history log, complete the following:



1. From the normal operating screen, press **log**.



The most recent history log (1) displays.



← First log

2. To access the next log, press . Continue to press  to view the remaining logs.
3. Press **OK** to return to normal operation.

Entering User Options When Pass Code Protected

To access the user options menu when the base station is pass code protected, complete the following:

1. From the normal operating screen, press **menu** to access the user options. The enter pass code screen displays.



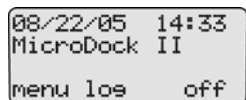
The cursor displays below the first value.

2. Press or to scroll to the first number of the pass code.

When the correct value displays, press **sel** to enter the first value. The cursor automatically moves to the next value.

3. Repeat step #2 for the remaining values.
4. Press **OK**. If the correct pass code is entered, the user options menu displays.

Incorrect Pass Code Entered: If an incorrect pass code is entered, the base station automatically returns to normal operation.

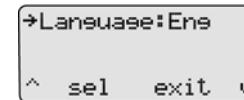


Repeat steps #1-4 to access the user options menu to try again.

Language

The base station provides five language options and can display all text on the LCD in the following languages:

- English
- French
- German
- Portuguese
- Spanish



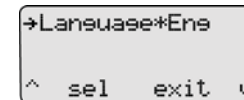
To select a different language, complete the following:

1. From the user options menu, press or to scroll to the **Language** option.

Note

The base station is shipped with language defined as English (Eng).

2. Press **sel** to confirm the selection and activate the field (changes to).



2. Press **sel** to confirm the selection and access the field (■ changes to ✖).

```
Format MMC
→Inlet Sel* auto
Pass Code
^ sel exit ↓
```

3. Press **▲** or **▼** to toggle between the **auto** and **manu** option.
4. When the desired option displays, press **sel** to confirm the selection and exit the field (✖ changes back to ■).
5. Press **▲** or **▼** to scroll to another user option.
Or
Press **exit** to return to normal operation.

Pass Code

The **Pass Code** option prevents unauthorized access to the user options menu. When the base station is pass code protected, **✖** displays during normal operation.

Note

The pass code is provided separately.

To enable/disable pass code protection, complete the following:

1. From the user options menu, press **▲** or **▼** to scroll to the **Pass Code** option.
2. Press **sel** to select the option and access the field (■ changes to ✖).

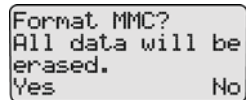
```
Format MMC
Inlet Sel:manu
→Pass Code*✖
^ sel exit ↓
```

The current mode displays beside the **Pass Code** option.

✓	Pass code protect enabled
✖	Pass code protect disabled

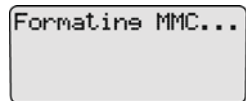
3. Press **▲** or **▼** to toggle between the options.
4. When the desired option displays, press **sel** to confirm the selection and deactivate the field (✖ changes back to ■).
5. Press **▲** or **▼** to scroll to another user option.
Or
Press **exit** to return to the normal operation.

5. Press **sel** to confirm the selection and to access the formatting confirmation screen.



Format MMC?
All data will be
erased.
Yes No

6. Press **Yes** to initiate formatting. The following screen displays.

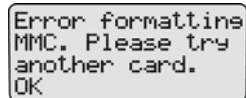


Formatting MMC...

When formatting is complete, the LCD automatically returns to the user options menu.

If **No** is selected, the LCD automatically returns to the user options menu.

If there is a problem with the card, the following screen displays.



Error formatting
MMC. Please try
another card.
OK

Press **OK** to acknowledge and insert a new card and repeat steps #4-6.

7. Press **▲** or **▼** to scroll to another user option.

Or

Press **exit** to return to normal operation.

For additional information about the MMC/SD card, refer to [Base Station MMC/SD Card](#).

Inlet Select

Note

Applicable only to custom and multi-gas types.

The **Inlet Sel** option enables either the automatic (**auto**) or manual (**manu**) function for selecting an inlet.



If the **auto** option is enabled, the base station automatically selects the correct gas inlet for the bump test or calibration.

If **manu** option is enabled, the applicable test gas must be selected each time a bump test or calibration is performed. If the **manu** option is enabled, refer to [Order of Gases Applied for Bump Tests and Calibrations](#) for important information.

To enable either the **auto** or **manu** option, complete the following:

1. From the user options menu, press **▲** or **▼** to scroll to the **Inlet Sel** option.


```
Str. M2BF-B03
M1 CSXF-01A
^      exit  v
```

If more than one docking module is connected to the base station, press  or  to scroll to the additional docking module firmware revisions (**M1 - M10**).

Note

Maximum 10 docking modules can be connected to a station. There is a maximum limit of six charging modules. Six charging modules plus four non-charging modules can be connected to the station.

2. Press  **exit** to return to normal operation.

Formatting the MMC/SD Card

Format MMC formats the MultiMediaCard (MMC) or the Secure Digital (SD) card.

⚠ Caution

Formatting a MMC/SD card will erase all data on the card.

To format an MMC/SD card, complete the following:

1. Activate the base station if required.
2. On the base station, remove the cover from the battery compartment. Refer to [Battery Installation](#).

3. Insert the MMC/SD card into the slot above the battery compartment.

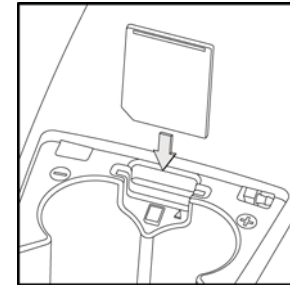






Figure 18. Inserting the MMC/SD Card into the Base Station

Note

If the MMC/SD card has never been formatted, the base station will automatically prompt to format the card (refer to steps #5-6).

4. Press  or  to scroll to the **Format MMC** option.

```
→Format MMC
  Inlet Sel:manu
  Pass Code:X
^  sel  exit  v
```

5. Press  or  to scroll to another user option.


Or

Press **exit** to return to the normal operation.





Backlight

This **Backlight** option enables, disables, or selects auto mode for the LCD lighting. The **auto** mode automatically disables the backlight when the base station is not in use.



Note



*The base station is shipped with the auto backlight option enabled. While operating from battery power only, select **auto** mode or  (off) to conserve the batteries.*

To enable/disable or select **auto** backlight, complete the following:

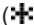



1. From the user options menu, press  or  to scroll to the **Backlight** option.
2. Press **sel** to select the option and access the field ( changes to .

```
Contrast :5
→Backlight:auto
About
^ sel exit v
```

3. Press  or  to scroll through the options.

	Enabled
	Disabled
auto	Automatic

Each selection displays beside **Backlight** and the backlight activates and deactivates, depending upon the selection.

4. Press **sel** to save the selection and exit the field ( changes back to .
5. Press  or  to scroll to another user option.

Or

Press **exit** to return to normal operation.

About

The **About** option displays the firmware revision for the base station and each docking module that is connected. To view the firmware revision for the base station and docking module(s), complete the following:

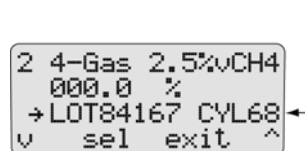
1. Press  or  to scroll to the **About** option.

```
Contrast :5
Backlight:auto
→About
^ sel exit v
```

Press **sel** to access the about base station screen.

20. Repeat step #19 for the remaining values.

The following screen displays the corresponding lot number for the attached gas cylinder.



21. Press **exit**. The **+** changes back to **→**.
22. To setup another inlet, repeat the procedures listed in the [Gas Type](#), [Gas Concentration Level](#), and the [Gas Cylinder Lot # Field](#) sections.
23. When all of the entries are completed, press **exit** to return to the user options menu.
24. Press **exit** again to return to normal operation.

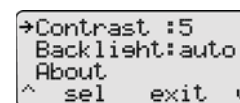
Pump Setup

Refer to [Defining Pump Speed](#) in the [Adding Another Docking Module](#) section.

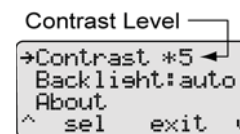
Contrast

The **Contrast** option brightens or darkens the LCD. To adjust the contrast level, complete the following:

1. From the user options menu, press **▲** or **▼** to scroll to the **Contrast** option.



2. Press **sel** to confirm the selection and access the field (**→** changes to **+**).



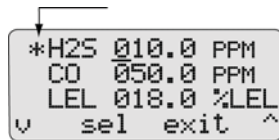
The contrast levels range from **2** (brightest) to **10** (darkest).

Note

The base station is shipped with the contrast level defined as 5.

3. Press **▲** or **▼** to select the desired contrast level.
4. Press **sel** to save the new value and exit the field (**+** changes back to **→**).

Press **sel** to select the required gas. **→** changes to ***→** and the cursor automatically displays below the first value.



13. Press **▲** or **▼** to scroll to the required value. Press **sel** to save the new value.

Or

Press **sel** to retain the current value. The cursor automatically moves to the next value.

14. Repeat step #13 for the remaining values, then press **exit**. The ***→** then changes back to **→**.

15. To enter a lot number for the corresponding gas cylinder, proceed to [Gas Cylinder Lot # Field](#).

Or

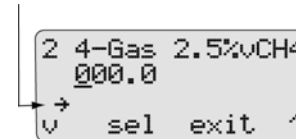
Press **exit** to return to the user options menu.

16. Press **exit** again to return to normal operation.

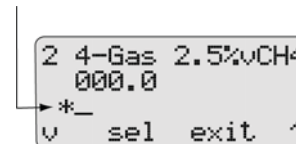
Gas Cylinder Lot # Field

Although this field is designed to enter the lot number of the corresponding gas cylinder, other types of data can be entered. A maximum of 14 characters (letters and/or numbers) can be selected.

17. Press **▼** to move down to the lot number field. Initially this field is blank.



18. Press **sel**. The **→** changes to ***→** and the cursor displays for the first value.



19. Press **▲** or **▼** to scroll to the first desired letter/number. Press **sel** to accept the value and automatically move the cursor to the next space.

7. To select a different gas type, press **sel**. **→** changes to ***** to indicate that the field is activated. Press **↖** or **↵** to scroll through the list of gas types.
8. When the desired gas type displays, press **sel**. ***** changes to **→** to confirm the new selection and to deactivate the field.
9. To enter the gas concentration level for the selected gas, proceed to the following section [Gas Concentration Level](#).
Or
Press **exit** to return to the user options menu.
10. Press **exit** again to return to normal operation.

Gas Concentration Level

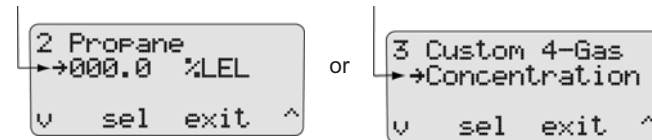
Depending upon the gas type selected, **ppm**, **%LEL**, or **%** displays beside the gas concentration level.

Note

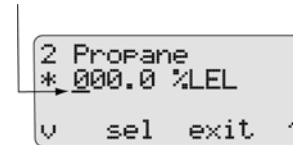
The following gas concentrations are factory configured and cannot be changed:

- *Four-gas-mix (4-Gas 2.5% vCH₄)*
- *Four-gas equivalent (4-Gas Equiv.)*
- *Three-gas SO₂ mix (3-Gas SO₂ Mi)*
- *The **Custom 4-Gas**, **Custom 3-Gas**, and **Custom 2-Gas** can be modified. However, only the gas concentration levels can be changed.*

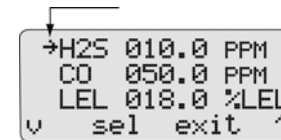
11. Press **↵** to move **→** down to the gas concentration level.



12. Press **sel**. If the gas concentration level can be modified, **→** changes to the ***** and the cursor displays below the first value.



For custom and multi-gas: All of the applicable gases display (for 4-Gas press **↵** to scroll to the remaining gas types currently not displayed).



MicroDock II
User Manual

Gas Type	Gas Concentration	
Cl₂ (chlorine) bump only	ppm	*
HCN (hydrogen cyanide)	ppm	*
H₂S (hydrogen sulfide)	ppm	*
NO (nitric oxide)	ppm	*
NO₂ (nitrogen dioxide)	ppm	*
PH₃ (phosphine)	ppm	*
SO₂ (sulfur dioxide)	ppm	*
Ethanol	% LEL	*
Ethanol Equiv.	% LEL	*
Hexane	% LEL	*
Hexane Equiv.	% LEL	*
Methane	% LEL	*
Methane Equiv.	% LEL	*
Pentane	% LEL	*
Pentane Equiv.	% LEL	*
Propane	% LEL	*
Propane Equi	% LEL	*
4 – Gas 2.5%vCH₄ (H ₂ S, CO, LEL, O ₂)	ppm and %LEL	
4 – Gas Equiv.	ppm and %LEL	

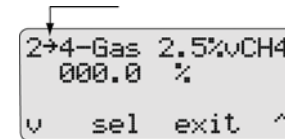
Gas Type	Gas Concentration	
Custom 4-Gas	ppm and %LEL	*
Custom 3-gas	ppm and %LEL	*
Custom 2-Gas	ppm and %LEL	*
3 – Gas SO₂ Mi (3-gas mix)	ppm and %LEL	
Isobutylene	ppm	*
LEL	%LEL	*
CO₂	ppm	*
CO₂ zero / N₂ (nitrogen)	ppm	*

Note

Scroll through options and functions when **→** displays. The ***** displays when a field is selected and can be modified.

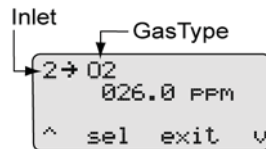
To select a gas type, complete the following:

- From the required inlet screen, **→** displays.



- If the required gas type is displayed, press **○** **↓** to move down to the gas concentration level. Proceed to the [Gas Concentration Level](#) section.

Continue to press $\odot \rightarrow$ to access the inlet 3, 4, and 5 screens. O_2 displays as the default gas type when each of the inlet screens are accessed for the first time.

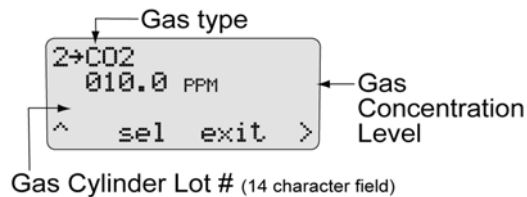


The inlet screens (2-5) have three options to modify:

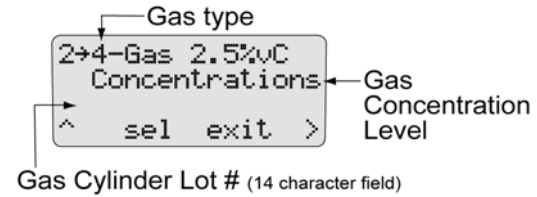
- [Gas Type](#)
- [Gas Concentration Level](#)
- [Gas Cylinder Lot # Field](#) (field initially displays blank until data is entered).

There are two types of screens:

- Single gas



- Multi-gas Type Screen



- To select a gas type, proceed to [Gas Type](#). Refer to [Table 16](#), for available gas types.

Gas Type

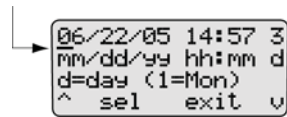
There are 33 gas types to select from. Refer to the following table.

Table 17. Inlets 2-5 – Available Gas Types

Gas Type	Gas Concentration	
<i>Note</i>		
<i>The * in column three indicates that the gas concentration level can be modified on the base station.</i>		
Purge (ambient air)	%	
O ₂ (oxygen)	%	
NH ₃ (ammonia)	ppm	*
CO (carbon monoxide)	ppm	*
ETO (ethylene oxide)	ppm	*
H ₂ (hydrogen)	ppm	*

MicroDock II User Manual

The cursor automatically displays below the first value of the month. Each value is selected, changed, and bypassed individually.



2. Press **↕** to toggle between **0** or **1**. When the correct value displays, press **sel** to confirm the change. The cursor then automatically moves to the second value of the month.

Or

Press **sel** to bypass the first value. The base station automatically retains the current value and proceeds to the second value of the month.

3. Repeat step #2 for the remaining time and date values.
4. Press **exit** to return to the user options menu.
5. Press **exit** again to return to normal operation.

Inlet Setup

The **Inlet Setup** option defines the

- the gas type(s)
- the corresponding gas concentrations level(s), and
- the gas cylinder lot # of each selected gas.

⚠ Warning

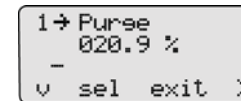
Failed tests can result if the inlets are not setup correctly.

For initial base station activation, ensure the inlets are installed correctly as follows:

- Inlet 1 is the default connection for ambient air.
- Inlet 2 is the default connection for four-gas mix, unless otherwise specified at purchase.
- Inlets 3-5 are designed connections for additional gases. However, unless specified at the time of purchase, inlets 3-5 are configured for ambient air.

To confirm that the inlets are setup correctly, complete the following:

1. From the user options menu, press **↕** or **⏪** to scroll to the **Inlet Setup** option.
2. Press **sel** to confirm the selection and access the inlet 1 (ambient air) screen.



Note

Inlet 1 is designated for ambient air only and cannot be changed.

3. From the inlet **1** screen, press **➤** to access the inlet **2** screen.

User Options Menu

The user options menu provides access to 10 options. The following user options are listed in the order they are displayed on the base station LCD.

Note

Bump tests or calibrations cannot be performed while accessing the user options menu. However, if a test is initiated before or while accessing the user options menu, the test automatically begins after exiting the user options menu.

To access the user options menu, complete the following:

1. Press and hold **menu** to access the first screen.

```

Time/Date
Inlet Setup
→PUMP Setup: 44%
^ sel exit v
    
```

If the base station is pass code protected, refer to [Entering User Options When Pass Code Protected](#).

2. Press **up** or **down** to scroll to different options. When **right** displays beside the desired option, press **sel** to select.
3. To exit the options menu and return to the normal operation, press **exit**.

Time/Date

Time/Date adjusts the time (hour/minute), the date (month/day/year) and the day of the week (1-7) of the base station.

To change the date, time, and/or day of the week, complete the following:

1. From the user options menu, press **up** or **down** to scroll to the **Time/Date** option.

Press **sel** to confirm the selection and access the time/date screen.

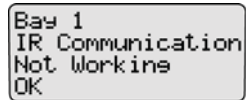
<pre> 06/22/05 14:57 3 mm/dd/yy hh:mm d d=day (1=Mon) ^ sel exit v </pre>	mm: month
	dd: day
	yy: year
	hh: hour
	mm: minute
	d: day of the week Monday = 1, Tuesday = 2, Wednesday = 3, etc.

Note

*The time and date values can only be changed in the order they are presented in this table. To bypass any time/date setting, press **sel**. The base station automatically retains the current value and proceeds to the next date/time value.*


MicroDock II User Manual


If a detector is inserted but not activated, the LCD displays the following message.




Bay 1
IR Communication
Not Working
OK


Press  **OK** to acknowledge the error message.

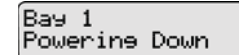
Batteries: The batteries are tested during activation and continuously thereafter. If battery power is extremely low, low battery icon  flashes.

MultiMediaCard (MMC) / Secure Digital (SD) Card: The MMC/SD card icon  displays continuously on the base station LCD during normal operation when the MMC/SD card is inserted. The MMC/SD card records a variety of data.

Pass Code Protection: If the base station is pass code protected, the pass code protect icon  displays on the base station LCD during normal operation.

Deactivating the Base Station

To deactivate the base station, it must be in normal operation. From the normal operation screen, press and hold  (the rightmost button) until **Powering Down** displays.



Bay 1
Powering Down


The powering down screen displays briefly before the base station deactivates.

Using the Base Station

Warning

To prevent possible injury and/or property damage, only use the base station in a safe atmosphere that is free of hazardous gas.

Ensure that the base station is attached to a venting system or used in a well ventilated area.

The base station pushbuttons are not labelled. The base station is operated by pressing the  pushbutton that is located directly below the text that displays on the LCD.

Confirming Inlet Setup

Warning


Failed tests can result if the inlets are not setup correctly.

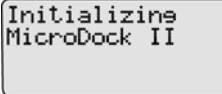
Before activating the base station for the first time, ensure that the gas cylinders are connected to the inlets correctly. Refer to [Installation](#). To confirm that the inlets are setup correctly, refer to [Inlet Setup](#) in the [User Options Menu](#) section.

Activating the Base Station

To activate the base station, complete the following:

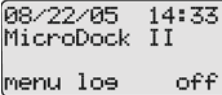
1. Connect power to the base station. Refer to [Installation](#).

2. Press and hold  (the left most button) until the initializing screen displays.



```
Initializing  
MicroDock II
```

The base station enters normal operation.

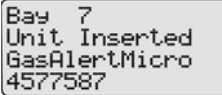


```
08/22/05 14:33  
MicroDock II  
menu los off
```

Self-Test

The base station automatically performs a self-test during startup.

Docking Module/Detector: The base station checks for connected docking modules and inserted detectors.



```
Bay 7  
Unit Inserted  
GasAlertMicro  
4577587
```

The LCD displays information about the docking modules, the detector type, and the detector serial number.

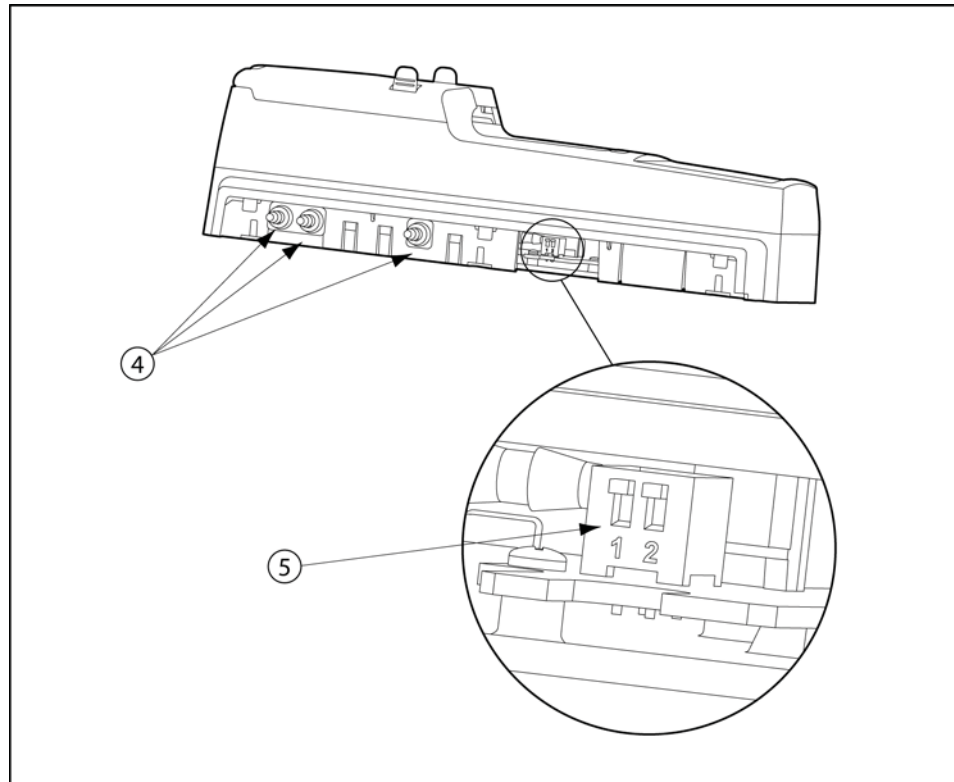


Figure 17. Changing Dip Switch Settings

Note

When reattaching the docking module, ensure the barbed tubing is inserted correctly. Ensure to correctly label the gas type on the docking module.

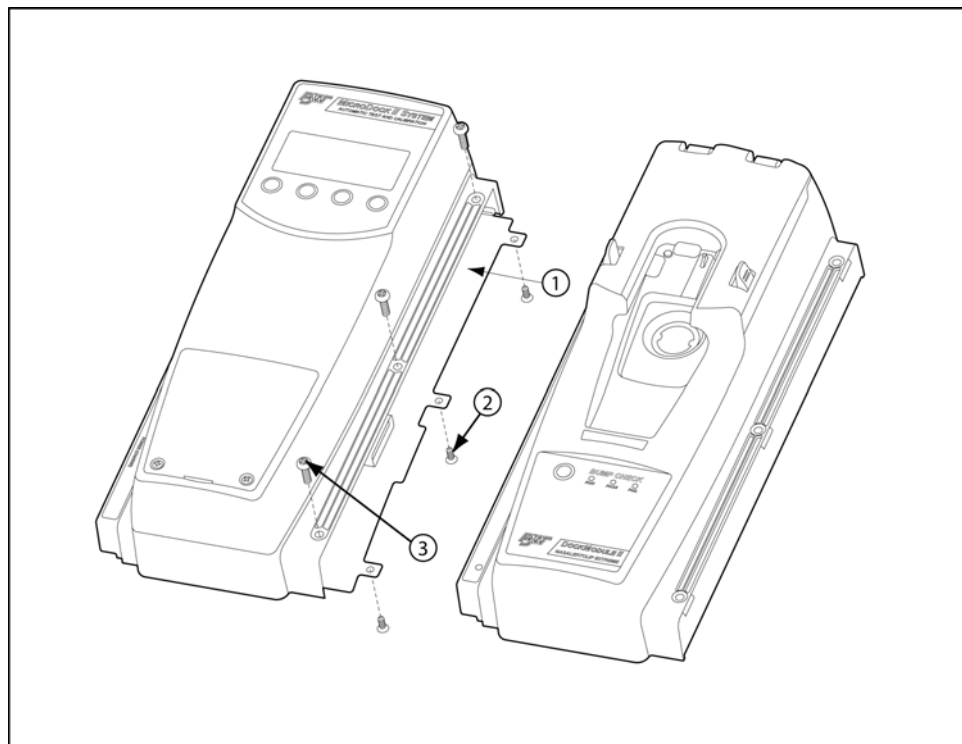
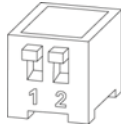
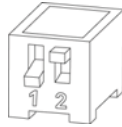

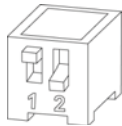


Figure 16. Detaching the GasAlertClip Extreme Module

Changing Dip Switch Settings (*GasAlertClip Extreme only*)

The gas type for bump tests is defined by setting the dipswitch within the GasAlertClip Extreme docking module.

Table 15. Dip Switch Settings

Gas Type	Dip Switch Setting
Sulphur dioxide (SO ₂)	
Oxygen (O ₂)	
Hydrogen sulfide (H ₂ S)	
Carbon monoxide (CO)	

To change the dipswitch setting on a GasAlertClip Extreme docking module refer to Tables 15 and 16, Figures 16 and 17, and complete the following:

1. Deactivate the base station.
2. Remove the three Phillips pan-head screws from the front and the six Phillips flat-head screws from the back cover plate.
3. Gently separate the docking module from the base station or other docking modules. Refer to [Figure 16](#).
4. Configure the gas type by setting the dip switches to the desired gas. Refer to [Table 15](#), for gas type and dip switch settings.
5. Reconnect the GasAlertClip Extreme docking module. Refer to [Figure 17](#).
Refer to [Table 12](#), for torque specifications.
6. Fasten the bottom cover plate using the six Phillips flat-head screws. Fasten the remaining three Phillips pan-head screws to the top of the docking module.

Table 16. Changing Dip Switch Settings

Item	Description
1	Bottom cover plate
2	Phillips flat-head screw (6)
3	Phillips pan-head screw (3)
4	Barbed fitting ports
5	Dip switch

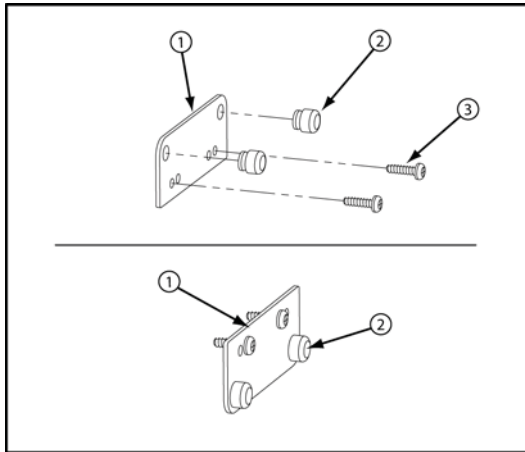


Figure 15. Parts of the Wall Mounting Plate

Table 14. Mounting the MicroDock II

Item	Description
1	Wall mounting plate (2)
2	Grommet (4)
3	Phillips self-tapping screw (8)

The base station and docking modules can be easily mounted to a secure surface. To mount the base station and docking modules, complete the following:

1. Determine a secure location to mount the base station.
Using the screws that are provided, attach the wall mounting plates to the base station and docking modules.
2. When the plates are mounted on the base station, measure horizontally on the wall a distance of 2.38 in. (60.32 mm) for the base station width.






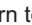
If mounting two or more docking modules that are attached on the wall, measure horizontally on the wall a distance of 1.64 in. (41.7 mm) of space between each docking module.
3. Use four screws to attach the base station to the secure surface.

MicroDock II User Manual

The factory default pump speed displays beside **Pump Setup**. The base station pump speed is measured as a percentage (%) and the flow meter measures speed in ml/min.

Note

The base station is shipped with the factory default pump speed set to 350 ml/min. (40-45%).

14. Monitor the flow meter until it stabilizes (5-20 minutes depending upon the type of flow meter).
15. From the base station, press  or  until the flow meter displays 350 ml/m.
16. From the base station, press  **exit** to save the new value and exit the **Pump Setup** field ( changes to .
17. Press  **exit** again to return to normal operation.
18. Repeat steps # 1-17 for each docking module that is added. Continue to step #18 and 19 for the last module added.
19. After all of the modules have been added, attach the end plate. Refer to [Figure 11](#).
20. Fasten the bottom cover plate to the space between the two docking modules using six Phillips flat-head screws. Refer to [Figure 13](#).

Note

When assembling or reassembling parts of the base station and docking modules, refer to the [Table 12](#).

Mounting the MicroDock II

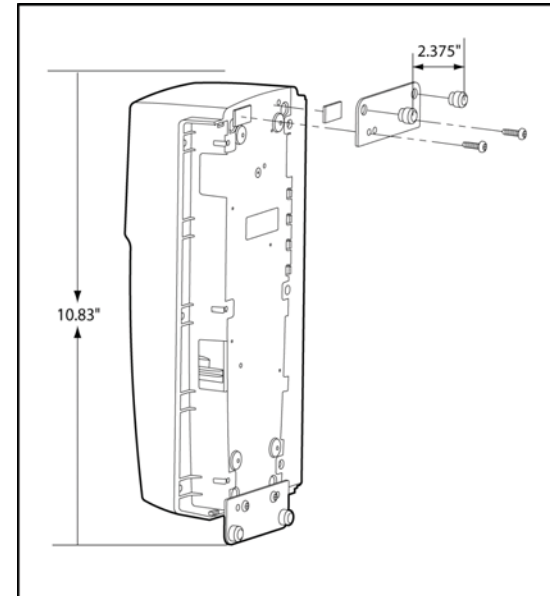


Figure 14. Attaching the Wall Mounting Plate

Note

When mounting two or more docking modules, each docking module requires an individual set of wall mounting plates.

Because of the variety of surfaces that the base station can be mounted to, mounting screws are not provided.

1. Deactivate the base station.
2. Remove the power cord from the POWER port. If applicable, remove the charger cord from the CHARGER port.
3. Remove the end plate. There are three Phillips screws on the front and three Phillips screws on the back.
4. Attach the new docking module.
Ensure the barbed fitting ports mate correctly with the gasket block. Ensure that the male and female PCB connectors mate correctly.

Initializing the New Docking Module

When a new docking module is connected, it must be initialized (setup to communicate with the base station).

5. Simultaneously press and hold BUMP CHECK on the new docking module while pressing (leftmost button) on the base station.
6. All of the LEDs on the new docking module light. On the base station LCD, the following screen displays to confirm that the new docking module has been successfully added.

```
New Receptacle
added
Position 8
OK
```

7. Press **OK**.
8. Deactivate the base station.

⚠ Caution

The base station must be deactivated after each module has been added.

Defining Pump Speed

The pump speed must be defined for each new docking module that is connected.

⚠ Warning

Perform the pump setup procedures in a clean atmosphere only.

9. Reactivate the base station and wait until it enters normal operation.
10. Connect a hose to a flow meter and to inlet 1 (PURGE) on the base station.
Allow the flow meter sufficient time to stabilize (approximately 30 minutes) before using it to ensure accurate flow readings.
11. From the base station, access the user options menu.
12. Press **↖** or **↙** to scroll to the Pump Setup option.
13. Press **sel** to activate the pump setup field (**■** changes to **✱**).

```
Time/Date
Inlet Setup
→PUMP Setup* 44%
v sel exit ^
```

The base station immediately begins pumping the ambient air.

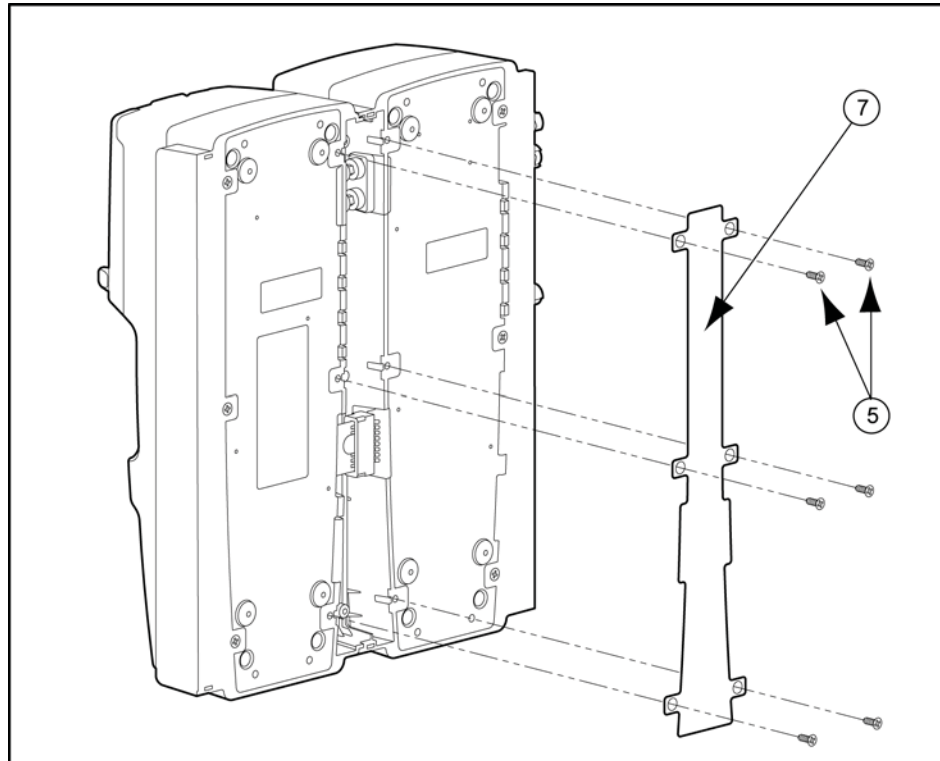


Figure 13. Attaching Back Cover Plate (Back View)

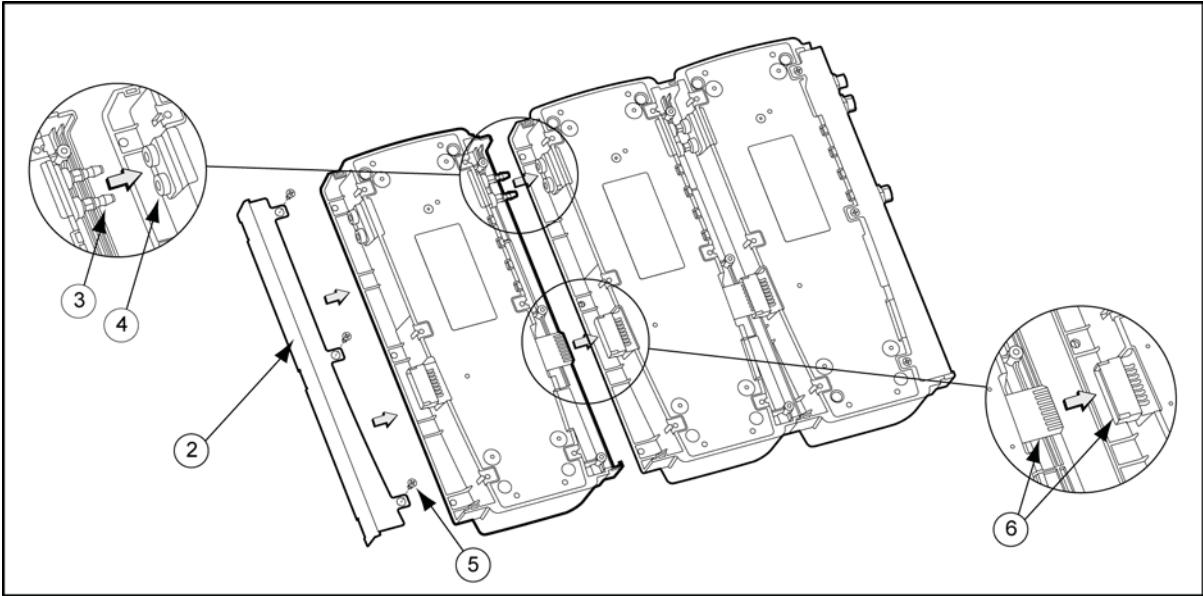


Figure 12. Adding Another Docking Module (Back View)

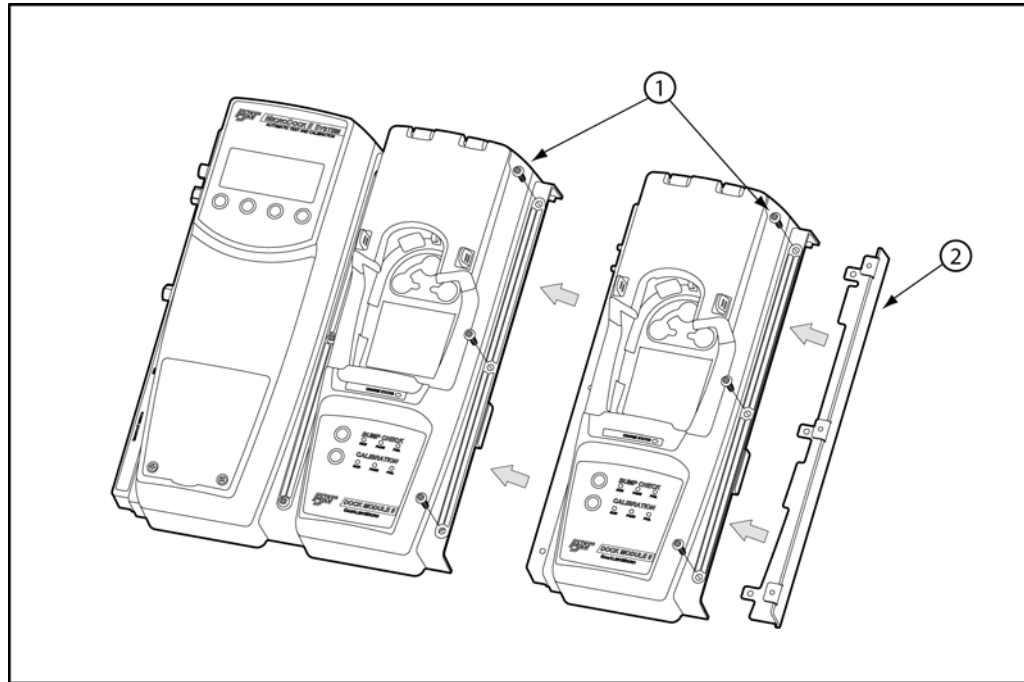


Figure 11. Adding Another Docking Module (Front View)

Adding Another Docking Module

If required, refer to [Using the Base Station](#) before adding a docking module.

⚠ Warning

Only one module can be connected at a time. Complete steps #1-20 for each docking module that is added.

To add another docking module, refer to [Table 12](#), and [Table 13](#), [Figure 11](#), [Figure 12](#), and [Figure 13](#), and complete the following procedures:

Table 12. Torque Specifications

Housing Assembly	Torque
Alligator clip	4-5 in lbs
Wall mounting plate	9-10 in lbs

Table 13. Adding Another Docking Module

Item	Description
1	Phillips pan-head screw (3)
2	End plate
3	Barbed fitting ports
4	Gasket block
5	Phillips flat-head screw
6	PCB connectors
7	Bottom cover plate

MicroDock II

User Manual

Note

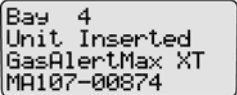
The detector will briefly alarm when the pump connector is inserted. This is normal. The alarm will deactivate when the detector is properly inserted into the docking module.

Ensure green is visible in the closed indicator. If it is not visible, the base station will not recognize the detector.

6. Lower the lid and press down until the release tabs click.

When the detector has been inserted correctly, the RUN LED(s) on the docking module lights yellow and the base station LCD displays the

- the docking module number,
- **Unit Inserted**,
- detector type, and
- detector serial number.



```
Bay 4
Unit Inserted
GasAlertMax XT
MA107-00874
```

7. To bypass the base station identification screen, press any button on the base station.

Inserting the GasAlertMax XT

⚠ Caution

Infrared or intense ambient light (sun or halogen) may interfere with the base station/detector communication.

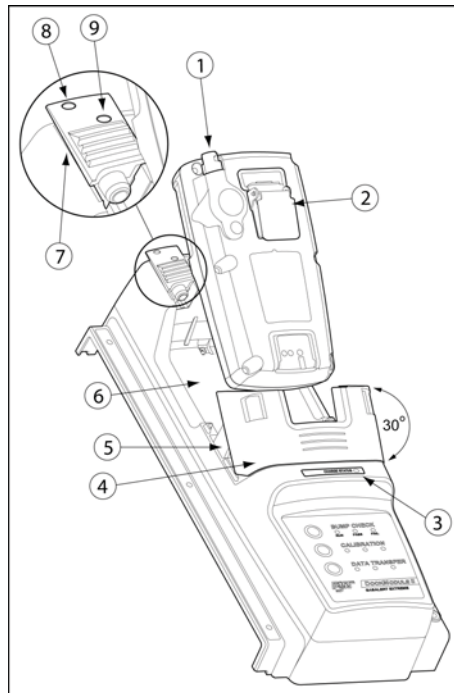


Figure 10. Inserting the GasAlertMax XT

Table 11. Inserting the GasAlertMax XT

Item	Description
1	Detector pump
2	Alligator clip
3	Charge status
4	Module lid
5	Release tabs
6	Detector bay
7	Pump connector
8	Indicator (closed)
9	Indicator (open)

1. Activate the detector and wait until it is in normal operation.
2. Ensure the alligator clip is closed and the ring is resting flat on the detector to prevent disruptions with data transmission.
3. Press the two release tabs on the docking module and raise the lid.

⚠ Warning

The docking module lid only raises upward 30° angle. Do not force the lid beyond its limit.

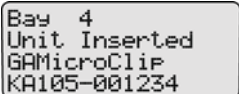
4. Insert the bottom of the detector (serial number up) at a 30° angle into the detector bay and then lower the top into place.
5. Push the pump connector towards the detector pump.

MicroDock II
User Manual

4. Lower the lid and press down until the release tabs click.

When the detector has been inserted correctly, the RUN LED(s) on the docking module lights yellow and the base station LCD displays the

- the docking module number,
- **Unit Inserted**,
- detector type, and
- detector serial number.



```
Bay 4
Unit Inserted
GAMicroClip
KA105-001234
```

5. To bypass the base station identification screen, press any button on the base station.

Inserting the GasAlertMicroClip

⚠ Caution

Infrared or intense ambient light (sun or halogen) may interfere with the base station/detector communication.

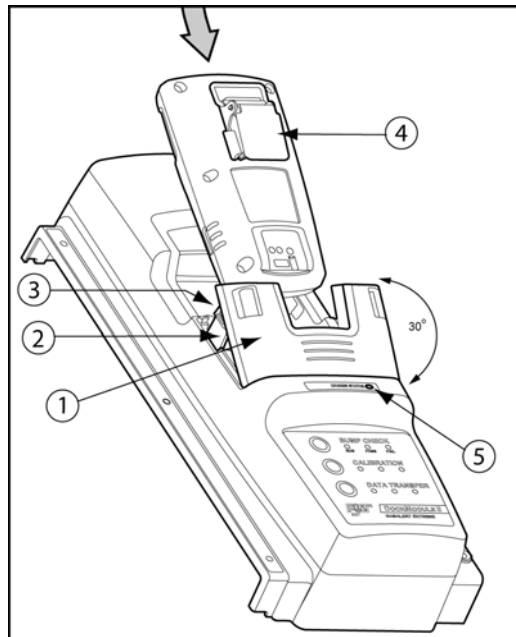


Figure 9. Inserting the GasAlertMicroClip

Table 10. Inserting the GasAlertMicroClip

Item	Description
1	Module lid
2	Release tabs
3	Detector bay
4	Alligator clip
5	Charger status indicator

Note

If the GasAlertMicroClip detector is fitted with a calibration cap or auxiliary filter, it must be removed prior to inserting it into the docking module.

1. Activate the detector and wait until it is in normal operation.
2. Press the two release tabs on the docking module and raise the lid.

⚠ Warning

The docking module lid only raises upward 30° angle. Do not force the lid beyond its limit.

3. Insert the bottom of the detector (serial number up) at a 30° angle into the detector bay and then lower the top into place.

MicroDock II

User Manual

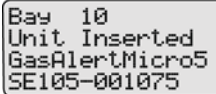
4. Hold the detector (serial number down) at a 45° angle and insert the bottom into the detector bay.

Ensure that the connector outlets on the bottom of the detector lock into place over the connector pins in the docking bay, and then lower the top into place.

5. Lower the lid and press down until the release tabs click.

When the detector has been inserted correctly, the RUN LED(s) on the docking module lights yellow and the base station LCD displays the

- the docking module number,
- **Unit Inserted**,
- detector type, and
- detector serial number.



```
Bay 10
Unit Inserted
GasAlertMicro5
SE105-001075
```

The GasAlertMicro 5/PID/IR detector LCD displays **Microdock**.

6. To bypass the base station identification screen, press any button on the base station.

Table 9. Inserting the GasAlertMicro 5/PID/IR

Item	Description
1	Docking module lid
2	Release tabs
3	Diffusion adapter
4	Detector bay
5	Connector pins (charging model only)
6	Charge status indicator (charging model only)
7	Connector outlets
8	Diffusion adapter release tab
9	Tool used to push down on diffusion adapter release tab

1. Activate the detector and wait until it is in normal operation.
2. Ensure the alligator clip is closed and the ring is resting flat on the detector to prevent disruptions with data transmission.

3. Press the two release tabs on the docking module and raise the lid.

Important: If the GasAlertMicro 5/PID/IR detector is fitted with a pump, the diffusion adapter must be removed from the docking module lid.

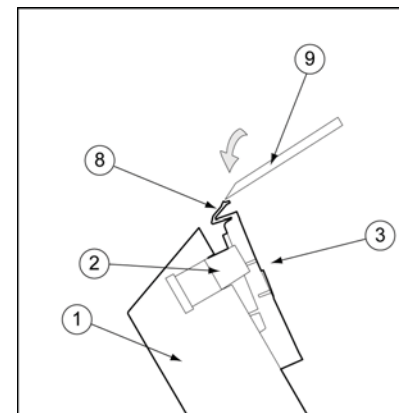


Figure 8. Removing the Diffusion Adapter

Using a small flathead screwdriver, press the release tab downwards. Pull the adapter forward slightly and then lift upwards to remove.

Inserting the GasAlertMicro 5/PID/IR

Note

The GasAlertMicro 5, GasAlertMicro 5 PID, and GasAlertMicro 5 IR are referenced as the GasAlertMicro 5/PID/IR.

⚠ Caution

Infrared or intense ambient light (sun or halogen) may interfere with the base station/detector communication.

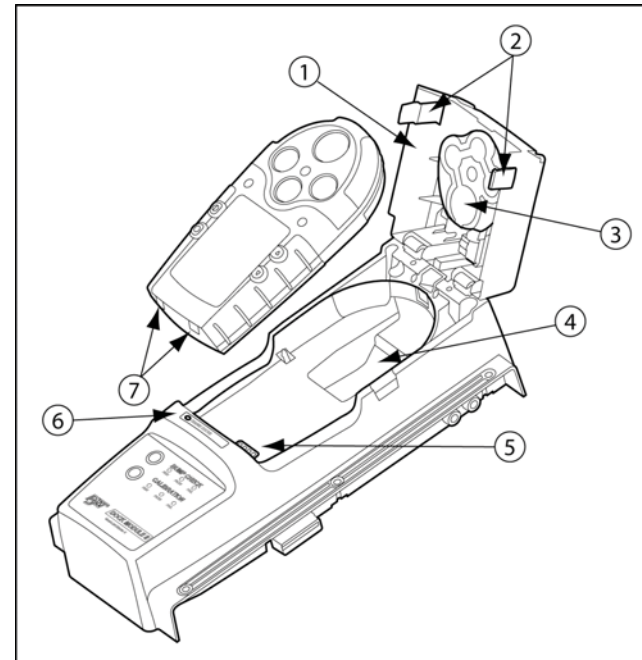


Figure 7. Inserting the GasAlertMicro 5/PID/IR

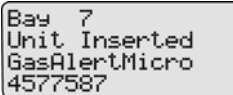
Note

Table 9 references Figure 7 and Figure 8.

5. Lower the lid and press down until the release tabs click.

When the detector has been inserted correctly, the RUN LED(s) on the docking module lights yellow and the base station LCD displays the

- the docking module number,
- **Unit Inserted**,
- detector type, and
- detector serial number.



```
Bay 7
Unit Inserted
GasAlertMicro
4577587
```

6. To bypass the base station identification screen, press any button on the base station.

Inserting the GasAlertMicro

⚠ Caution

Infrared or intense ambient light (sun or halogen) may interfere with the base station/detector communication.

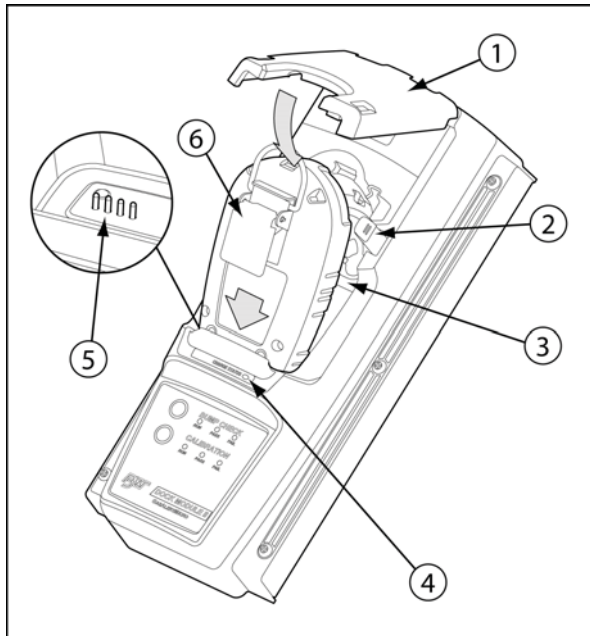
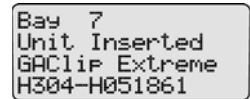


Figure 6. Inserting the GasAlertMicro

Table 8. Inserting the GasAlertMicro

Item	Description
1	Docking module lid
2	Release tabs
3	Detector bay
4	Charge status indicator (charging model only)
5	Connector pins (charging model only)
6	Alligator clip

1. Activate the detector and wait until it is in normal operation.
2. Ensure the alligator clip is closed and the ring is resting flat on the detector to prevent disruptions with data transmission.
3. Press the two release tabs on the docking module and raise the lid.
4. Insert the bottom of the detector into the detector bay (serial number up) and then lower the top into place.



```
Bay 7
Unit Inserted
GAClip Extreme
H304-H051861
```

6. To bypass the base station identification screen, press any button on the base station.

Inserting the GasAlertClip Extreme and the GasAlert Extreme

⚠ Caution

Infrared or intense ambient light (sun or halogen) may interfere with the base station/detector communication.

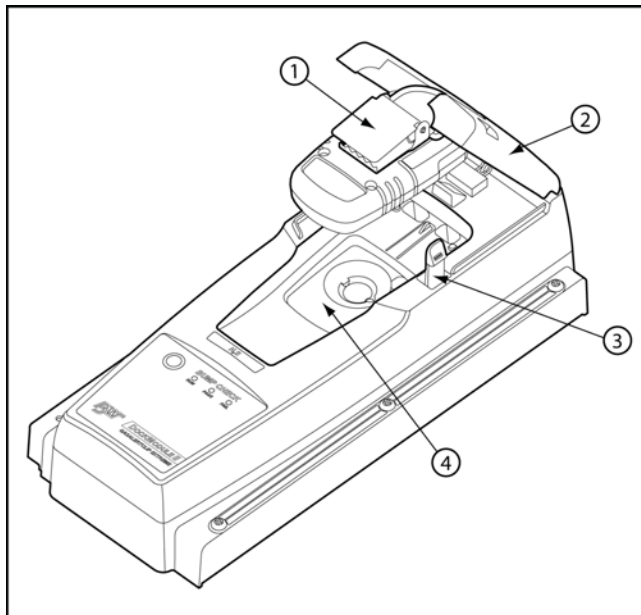


Figure 5. Inserting the GasAlertClip Extreme and the GasAlert Extreme

Table 7. Inserting the GasAlertClip Extreme and the GasAlert Extreme

Item	Description
1	Alligator clip
2	Docking module lid
3	Release tabs
4	Detector bay

1. Activate the detector and wait until it is in normal operation.
2. Ensure the alligator clip is closed and the ring is resting flat to prevent disruptions with the data transmission.
3. Press the two release tabs on the docking module and raise the lid.
4. Lower the detector (serial number up) into the detector bay. Push forward to ensure the top of the detector connects with the top of the bay.
5. Lower the lid and press down until the release tabs click.

When the detector has been inserted correctly, the RUN LED(s) on the docking module lights yellow and the base station LCD displays the

- the docking module number,
- **Unit Inserted,**
- detector type, and
- detector serial number.

Note

The base station can operate from either an electrical power source or batteries. The batteries will provide automatic backup power if the main power fails.

1. Connect the power cord to the POWER port on the base station and then plug the cord into an AC outlet.
To install the batteries, refer to [Battery Installation](#).
2. Connect the charger cord to the CHARGER port on the base station and then plug the cord into an AC outlet (if applicable).
3. Attach all gas connections. Inlet 1 (PURGE) is configured for ambient air and inlets 2-5 are configured for calibration/test gases. Refer to [Confirming Inlet Setup](#).
4. Connect the demand flow regulator. A demand flow regulator must be used with all gas cylinder connections.
5. Ensure the exhaust line is not connected to a negative pressure system.

For AC main installation, a circuit breaker must be integrated in the building installation as a disconnect device for the base station.

The disconnect device must be installed in close proximity to the base station and must be marked as a disconnecting method for the base station.

Battery Installation

⚠ Warning

Only change batteries in an atmosphere that is free of hazardous gas. Failure to adhere to this warning can result in personal injury and/or property damage.

To install batteries in the base station, refer to [Figure 4](#), and complete the following:

1. Loosen the retaining screws from the battery cover. Do not remove the retaining screws from the battery cover.
2. Remove the battery cover.
3. Insert four C-cell batteries into the battery compartment.
4. Replace the battery cover and tighten the retaining screws. Do not over tighten the screws. Refer to [Table 12](#).

Installation

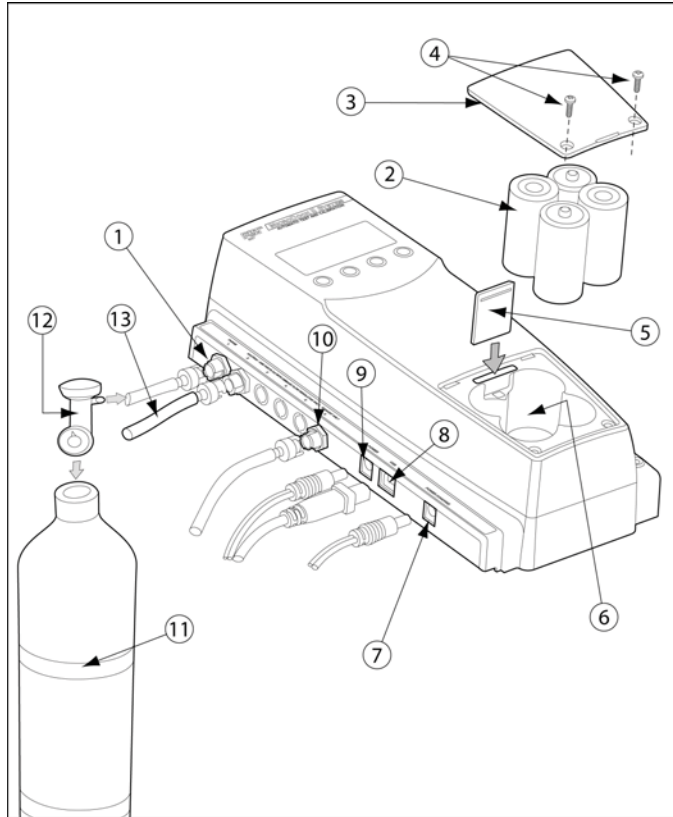


Figure 4. Base Station Connections

Table 6. Base Station Connections

Item	Description
1	Inlet filter assembly (PURGE 1)
2	C-cell batteries (4)
3	Battery cover
4	Phillips pan head retaining screws (2)
5	MMC or SD card
6	Battery compartment
7	Charger port
8	USB port
9	Power port
10	Exhaust outlet
11	Gas cylinder
12	Demand flow regulator
13	Calibration gas hose

⚠ Warning

The atmosphere must be free of background gas. Do not use the base station in a hazardous area.

All required National Electrical Codes (NEC) and safety standards must be followed.

Base Station Pushbuttons

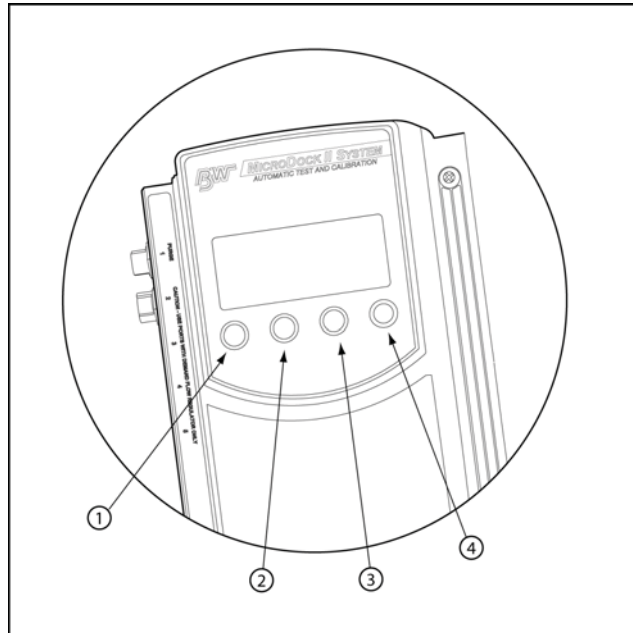


Figure 3. Base Station Pushbuttons






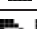

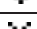
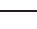





The base station pushbuttons activate, deactivate, scroll, select options, and perform functions.

Table 5. Base Station Pushbuttons

Item	Description
1	<ul style="list-style-type: none"> • Activate the base station • Select menu to access the user options • Select \blacktriangleleft to scroll to different user options or to other functions/selections within a user option • Select OK
2	<ul style="list-style-type: none"> • Select log to view the results history log • Select sel to select an option • Access a modifiable field
3	<ul style="list-style-type: none"> • Select exit to exit from a modifiable option • Select exit from the user options menu to enter normal operation
4	<ul style="list-style-type: none"> • Deactivate the base station • Select \blacktriangleright to scroll to different user options or to other functions/selections within a user option

Display Elements








Table 3. Display Elements

Icon	Description
	AC power
	Batteries charged
	Batteries half-charged
	Batteries at low level
	MMC or SD card
	MMC or SD card not inserted
	Test pass
	Test fail
	Cursor and sensor disabled
	Scroll up
	Scroll down
	Selection arrow
	Selected to be modified
	Pass code protected

Pushbuttons

Docking Module Pushbuttons

Table 4. Docking Module Pushbuttons

Pushbutton	Description
 BUMP CHECK	To bump test a detector, press  BUMP CHECK . After connecting a new docking module, press and hold  BUMP CHECK to send a confirmation signal back to the base station.
 CALIBRATION	To calibrate a detector, press  CALIBRATION (all models excluding GasAlertClip Extreme).
 DATA TRANSFER	To transfer datalog/event log information from a detector, press  DATA TRANSFER . (GasAlert Extreme, GasAlertMicroClip, and GasAlertMax XT only). The Automatic Datalog Download option is available for the GasAlertMicroClip and GasAlertMax XT docking modules only. For more information, refer to Automatic Datalog Download (GasAlertMicroClip and GasAlertMax XT only)

Parts of the MicroDock II Base Station and Docking Module

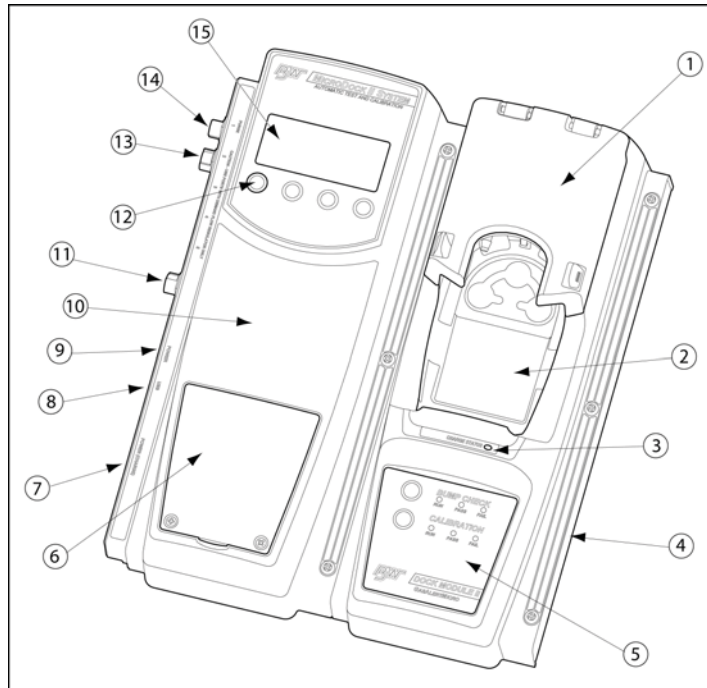


Figure 2. The MicroDock II Docking Module

Table 2. The MicroDock II and Docking Module

Item	Description
1	Docking module lid
2	Detector bay
3	Charger status LED (optional)
4	Docking module
5	Docking module pushbuttons and status LEDs
6	Battery cover
7	Charger port (optional)
8	USB port
9	Power port
10	Base station
11	Exhaust outlet
12	Station pushbuttons
13	Calibration gas inlet (inlet 2)
14	Zero air/purge inlet (inlet 1)
15	Liquid crystal display (LCD)

MicroDock II Base Station and Docking Modules

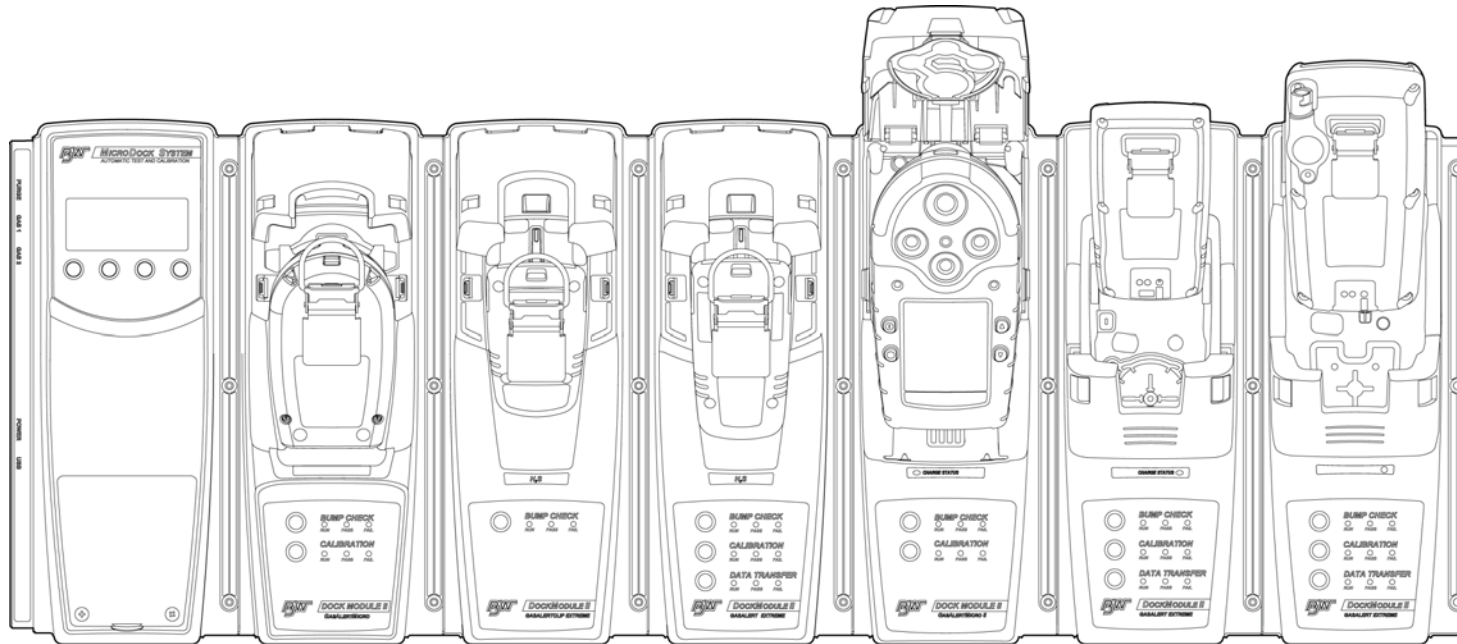


Figure 1. MicroDock II Base Station and Docking Modules

To connect additional docking modules and to correctly insert detectors into docking modules, refer to [Installation](#).

Getting Started

Confirm that the items listed below are included with the base station. If the base station is damaged or parts are missing, contact the place of purchase immediately.

- Batteries (four replaceable C-cell alkaline batteries)
- 128 MB Delkin MultiMediaCard (MMC) inserted
- USB cable
- Two to four calibration gas hoses (depending upon order at the time of purchase) with quick connect fittings
- Inlet filter assembly
- Power adapter
- Charger adapter (charger models only)
- CD: MicroDock II User Manual and MicroDock II Quick Reference Guide translations
- MicroDock II Quick Reference Guide
- Fleet Manager II CD ROM

Note

A standard MicroDock II base station is shipped with two inlets. A maximum of four calibration gas inlets can be included if specified by the user before purchasing.

To order replacement parts, refer to [Replacement Parts and Accessories](#).



For information regarding the operations and functions of the base station, refer to the following figures and tables.

- [Figure 1. MicroDock II Base Station and Docking Modules](#)
- [Figure 2.](#) and [Table 2. The MicroDock II and Docking Module](#) (describes the base station)
- [Table 3. Display Elements](#) (describes the base station LCD icons)
- [Table 4. Docking Module Pushbuttons](#)
- [Figure 3.](#) and [Table 5. Base Station Pushbuttons](#)
- [Figure 4.](#) and [Table 6. Base Station Connections](#)

⚠ Cautions

- Use only BW approved batteries; do not use alkaline or other rechargeable batteries with this charger.
- For indoor use only.
- Do not immerse the charger in liquids.
- Do not expose the charger to electrical shock or severe continuous mechanical shock.
- Ensure the detector battery pack is locked in place before operating the detector.
- To eliminate the risk of electrical shock, disconnect and deactivate the charger when cleaning or performing maintenance.
- Avoid touching the charger and detector contact pins.
- Substitution of components may impair Intrinsic Safety of the detector under charge.
- Do not charge the battery pack with any other charger.
- Do not attempt to disassemble, adjust, or service the charger unless instructions are provided to perform a procedure, or a part is listed as a replacement part in the user manual. Use only BW Technologies replacement parts. Refer to [Replacement Parts and Accessories](#).
- The charger warranty will be void if a customer, personnel, or third parties damage the charger during repair attempts. Any non-BW Technologies by Honeywell service/repair attempts will void this warranty.

Table 1. International Symbols

Symbol	Description
	Approved to both U.S. and Canadian Standards by CSA International
	Conforms to European Union Directives

⚠ Cautions

MicroDock II base station

- If the base station is damaged or parts are missing, contact [BW Technologies by Honeywell](#) immediately.
- The base station must be used only in an area that is free of background gas. Do not use the base station in a hazardous area. Failure to adhere to this caution can lead to fire and/or explosion.
- This equipment uses potentially harmful gas for calibrations. The base station must be attached to a venting system or be used in a well-ventilated area.
- Perform calibrations and bump checks only in a clean atmosphere that is free of background gas.
- The maximum recommended exhaust line length is 50 ft. (15.24 m).
- Ensure that the inlet filter is clean.
- Ensure that all gas cylinders contain enough gas.
- Ensure the exhaust line is not connected to a negative pressure system.
- A demand flow regulator must be used with all gas cylinder connections.
- Do not expose the base station to electrical shock or severe continuous mechanical shock.
- The base station warranty will be void if the unit is disassembled, adjusted, or serviced by non-BW Technologies personnel.
- Do not immerse the base station in liquids.

GasAlertMicro, GasAlertMicro 5/PID/IR, GasAlertMicroClip, and GasAlertMax XT Chargers

- If the charger is damaged or parts are missing, contact [BW Technologies by Honeywell](#) immediately.
- Do not change or charge the batteries in a hazardous location. Do not use the charger in a hazardous location. Failure to adhere to these precautions can lead to fire and/or explosion.
- Read and adhere to all instructions and precautions that are provided with the charger. Failure to do so can result in fire, electric shock, or other personal injury and/or property damage.

Contacting BW Technologies by Honeywell

To contact BW Technologies by Honeywell, call:

USA: 1-888-749-8878

Canada: 1-800-663-4164

Europe: +44 (0) 1295 700300

Other countries: +1-403-248-9226

Address correspondence to:

BW Technologies by Honeywell

2840 – 2 Avenue S.E.

Calgary, AB T2A 7X9

CANADA

Email us at: info@gasmonitors.com

Visit BW Technologies by Honeywell's website at: www.gasmonitors.com

ISO 9001

Safety Information - Read First

Use the base station only as specified in this manual.

International symbols on the base station and in this manual are explained in Table 1.

Read the Caution statements on the following pages before using the base station.



This instrument contains batteries. Do not mix with the solid waste stream. Spent batteries should be disposed of by a qualified recycler or hazardous materials handler.

MicroDock II

Introduction

Warning

To ensure personal safety, read the [Safety Information](#) before using the MicroDock II Base Station.

The MicroDock II Automatic Test and Calibration Station (“the base station”) provides automated calibration and bump testing for

- GasAlertClip Extreme,
- GasAlert Extreme,
- GasAlertMicro,
- GasAlertMicro 5,
- GasAlertMicro 5 PID,
- GasAlertMicro 5 IR,
- GasAlertMicroClip, and
- GasAlertMax XT detectors.

The base station also provides data transfer for

- GasAlert Extreme,
- GasAlertMicroClip, and
- GasAlertMax XT detectors.

A maximum of 10 modules can be connected to the station.

Note

There is a maximum of six charging modules.

Six charging modules plus four non-charging modules can be connected to the station. Refer to [Charging the Battery Pack \(Excluding GasAlert Extreme and GasAlertClip Extreme\)](#).

List of Figures

Figure	Title	Page
1.	MicroDock II Base Station and Docking Modules.....	6
2.	The MicroDock II Docking Module.....	7
3.	Base Station Pushbuttons	9
4.	Base Station Connections	10
5.	Inserting the GasAlertClip Extreme and the GasAlert Extreme.....	12
6.	Inserting the GasAlertMicro	14
7.	Inserting the GasAlertMicro 5/PID/IR	16
8.	Removing the Diffusion Adapter.....	17
9.	Inserting the GasAlertMicroClip.....	19
10.	Inserting the GasAlertMax XT	21
11.	Adding Another Docking Module (Front View)	24
12.	Adding Another Docking Module (Back View).....	25
13.	Attaching Back Cover Plate (Back View).....	26
14.	Attaching the Wall Mounting Plate	28
15.	Parts of the Wall Mounting Plate	29
16.	Detaching the GasAlertClip Extreme Module	31
17.	Changing Dip Switch Settings	32
18.	Inserting the MMC/SD Card into the Base Station	43
19.	Load Configuration File Dialog Box	68
20.	Save Configuration Dialog Box	69
21.	Save to MicroDock(s) Dialog Box.....	69
22.	Replacing a MMC/SD Card	70

MicroDock II
User Manual

List of Tables

Title	Figure	Page
1.	International Symbols	4
2.	The MicroDock II and Docking Module.....	7
3.	Display Elements	8
4.	Docking Module Pushbuttons.....	8
5.	Base Station Pushbuttons	9
6.	Base Station Connections	10
7.	Inserting the GasAlertClip Extreme and the GasAlert Extreme.....	12
8.	Inserting the GasAlertMicro	14
9.	Inserting the GasAlertMicro 5/PID/IR	17
10.	Inserting the GasAlertMicroClip.....	19
11.	Inserting the GasAlertMax XT	21
12.	Torque Specifications	23
13.	Adding Another Docking Module.....	23
14.	Mounting the MicroDock II.....	29
15.	Dip Switch Settings	30
16.	Changing Dip Switch Settings	30
17.	Inlets 2-5 – Available Gas Types.....	37
18.	Gas Type Application Table	56
19.	Gas Application Rules	57
20.	Charger Status LED	72
21.	Troubleshooting Tips	74
22.	Replacement Parts and Accessories	79

MicroDock II

User Manual

Title	Page
Charging the Battery Pack (Excluding GasAlert Extreme and GasAlertClip Extreme)	71
Charger/Battery Pack Guidelines.....	71
Charging Different Detectors Together	72
Charging Procedure	72
Maintenance	73
Battery Pack Storage	73
GasAlertMicro and GasAlertMicro 5/PID/IR.....	73
GasAlertMicroClip.....	73
Troubleshooting.....	74
Replacement Parts and Accessories	79
Specifications.....	80
Charger Specifications.....	81

Title	Page
Accessing the MMC/SD Card During a Test	54
Order of Gases Applied for Bump Tests and Calibrations.....	55
Bump Test.....	58
Bump Test Results.....	60
Bump Pass	60
Bump Fail.....	60
Incorrect Inlet Setup.....	61
Sensor Disabled	61
Calibration	62
Guidelines	62
Calibration Procedure (All models excluding the GasAlertClip Extreme).....	63
GasAlertMicro 5 IR with CO ₂ Sensor.....	64
Calibration Results.....	65
Calibration Pass.....	65
Calibration Fail.....	65
Incorrect Inlet Setup.....	66
Sensor Disabled	66
Data Transfer (GasAlert Extreme, GasAlertMicroClip, and GasAlertMax XT only).....	67
Transferring Datalogs	67
Automatic Datalog Download (GasAlertMicroClip and GasAlertMax XT only)	68
Using the IR Link	68
Using the MicroDock II.....	68
Base Station MMC/SD Card.....	70
Event Logging	70
Inserting/Replacing a MMC/SD Card	70
Accessing Test Results.....	71
PC Requirements	71

MicroDock II
User Manual

Title	Page
Confirming Inlet Setup	33
Activating the Base Station	33
Self-Test.....	33
Deactivating the Base Station	34
User Options Menu	35
Time/Date	35
Inlet Setup.....	36
Gas Type	37
Gas Concentration Level	39
Gas Cylinder Lot # Field	40
Pump Setup	41
Contrast	41
Backlight	42
About.....	42
Formatting the MMC/SD Card	43
Inlet Select	44
Pass Code	45
Entering User Options When Pass Code Protected	46
Language	46
Results History.....	47
Reconfiguring the Detector (not applicable to the GasAlertClip Extreme).....	48
Gas Conflicts	50
Abort Option	51
Conflicts	51
Base Station Selects the Gas Inlet	52
User Selects Gas Inlet	52
Not Found	53

Table of Contents

Table	Page
Introduction	1
Contacting BW Technologies by Honeywell	2
Safety Information - Read First	2
Getting Started	5
MicroDock II Base Station and Docking Modules	6
Parts of the MicroDock II Base Station and Docking Module	7
Display Elements	8
Pushbuttons	8
Docking Module Pushbuttons	8
Base Station Pushbuttons	9
Installation	10
Battery Installation	11
Inserting the GasAlertClip Extreme and the GasAlert Extreme	12
Inserting the GasAlertMicro	14
Inserting the GasAlertMicro 5/PID/IR.....	16
Inserting the GasAlertMicroClip	19
Inserting the GasAlertMax XT.....	21
Adding Another Docking Module	23
Initializing the New Docking Module	27
Defining Pump Speed	27
Mounting the MicroDock II	28
Changing Dip Switch Settings (GasAlertClip Extreme only)	30
Using the Base Station	33

Limited Warranty and Limitation Liability

BW Technologies LP (BW) warrants the product to be free from defects in material and workmanship under normal use and service for a period of two years, beginning on the date of shipment to the buyer. This warranty extends only to the sale of new and unused products to the original buyer. BW's warranty obligation is limited, at BW's option, to refund of the purchase price, repair or replacement of a defective product that is returned to a BW authorized service center within the warranty period. In no event shall BW's liability hereunder exceed the purchase price actually paid by the buyer for the Product. This warranty does not include:

- a) fuses, disposable batteries or the routine replacement of parts due to the normal wear and tear of the product arising from use;
- b) any product which in BW's opinion, has been misused, altered, neglected or damaged, by accident or abnormal conditions of operation, handling or use;
- c) any damage or defects attributable to repair of the product by any person other than an authorized dealer, or the installation of unapproved parts on the product; or

The obligations set forth in this warranty are conditional on:

- a) proper storage, installation, calibration, use, maintenance and compliance with the product manual instructions and any other applicable recommendations of BW;
- b) the buyer promptly notifying BW of any defect and, if required, promptly making the product available for correction. No goods shall be returned to BW until receipt by the buyer of shipping instructions from BW; and
- c) the right of BW to require that the buyer provide proof of purchase such as the original invoice, bill of sale or packing slip to establish that the product is within the warranty period.

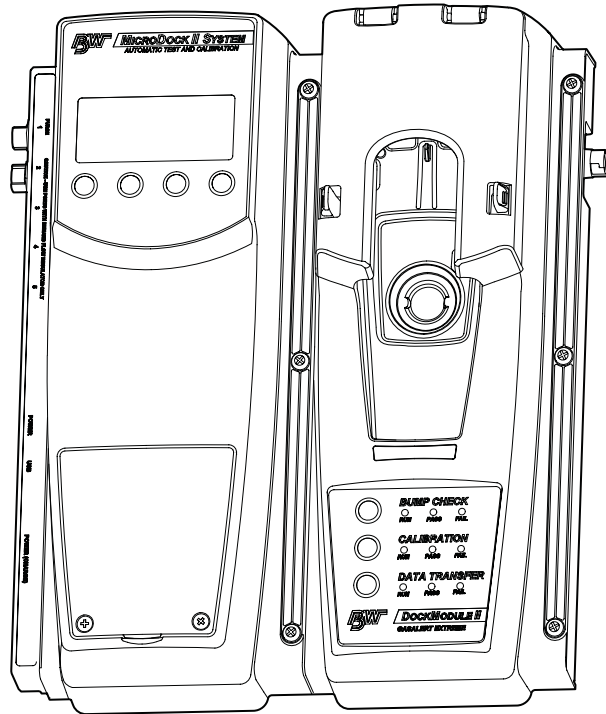
THE BUYER AGREES THAT THIS WARRANTY IS THE BUYER'S SOLE AND EXCLUSIVE REMEDY AND IS IN LIEU OF ALL OTHER WARRANTIES, EXPRESS OR IMPLIED, INCLUDING BUT NOT LIMITED TO ANY IMPLIED WARRANTY OF MERCHANTABILITY OR FITNESS FOR A PARTICULAR PURPOSE. BW SHALL NOT BE LIABLE FOR ANY SPECIAL, INDIRECT, INCIDENTAL, OR BASED ON CONTRACT, TORT OR RELIANCE OR ANY OTHER THEORY.

Since some countries or states do not allow limitation of the term of an implied warranty, or exclusion or limitation of incidental or consequential damages, the limitations and exclusions of this warranty may not apply to every buyer. If any provision of this warranty is held invalid or unenforceable by a court of competent jurisdiction, such holding will not affect the validity or enforceability of any other provision.

BW Technologies by Honeywell
Corporate Headquarters
2840 - 2nd Ave. SE
Calgary, AB
Canada T2A 7X9

BW Technologies by Honeywell
America
3279 West Pioneer Parkway
Arlington, TX
USA 76013

BW Technologies by Honeywell
Europe
5 Canada Close
Banbury, Oxfordshire
United Kingdom OX16 2RT



MicroDock II

Automatic Test and Calibration Station

User Manual

BWF
Technologies
by Honeywell