

ProtectorHMI

Data Visualization & Historian for GDS Corp Alarm & Display Controllers

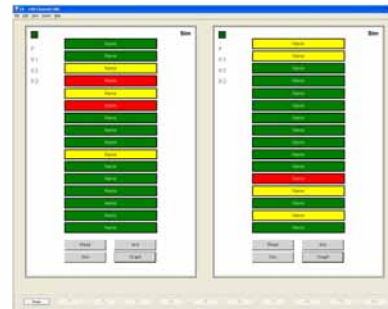
- ◆ Monitor 2 to 160 points in real time
- ◆ Trend view includes 15 minute and 24Hr trend graphs, plus access to all history data
- ◆ Up to ten customer-specific plot screens with current values, 15 minute trend and alarm status shown in real time
- ◆ Detailed record of alarm, calibration, HMI configuration and other events
- ◆ Data stored in industry-standard "CSV" format for easy retrieval
- ◆ Interface to ten C1, C2 & C2 Quad controller via RS-485 MODBUS interface
- ◆ Alarm 2 color options (Red, Orange, Blue) for intuitive and rapid recognition of alarm conditions

ProtectorHMI (human-machine interface) provides centralized monitoring, visualization and data archive for GDS Corp's C1 *Protector Series* 16 channel controllers. *ProtectorHMI* can monitor from one to ten controllers, providing real-time status display and historical trend data for 16 to 160 points.



Protector HMI configured for 160 points

In addition to real-time display of alarm status and input values, *ProtectorHMI* can display most-recent 15 minute and most-recent 24 hour trend graphs at any time for any of the possible 160 channels. Data is archived on a 24Hr basis and is stored in industry-standard ".csv" files that are easily imported into Microsoft EXCEL™, Microsoft ACCESS™ or other data processing applications.



Configured for 32 points

Up to 10 customer-specific plot screens can be created that show sensor locations and real-time status. A single click on a primary screen indicator automatically calls up the appropriate plot image, sensor locations and sensor status.

Note: ProtectorHMI provides data display and historian functions ONLY! ProtectorHMI is WindowsXP® based and cannot be used to control critical alarm events.



2513 Hwy 646, Santa Fe, Texas 77510
(409) 927-2980 • (409) 927-4180 Fax
www.gdscorp.com • info@gdscorp.com

GDS CORP

Monitored Points 160 points maximum (Up to ten C1 Protector controllers)

Sample Rate Determined by number of controllers and RS-485 serial ports; Typical 5 seconds to sample three controllers on single RS-485 circuit

Output Master screen shows color-coded alarm status, tag names, values, and optional bar graph. All data read from C1 or C2 Protector controller (no duplicate data entry required)

Individual 24 hour text-formatted "CSV" data files, one file per controller per day. Files contain minimum, maximum and average data on one-minute intervals for each channel.

Individual 24 hour text-formatted alarm and event log files, one file per controller per day.

PC System Requirements Intel-compatible personal computer running Microsoft™ Windows® XP with Service Pack 2 or later

1.4 GHz Pentium III processor or better; Pentium IV processor is recommended

512MB RAM

256 MB free hard disk space plus 1GB per attached controller

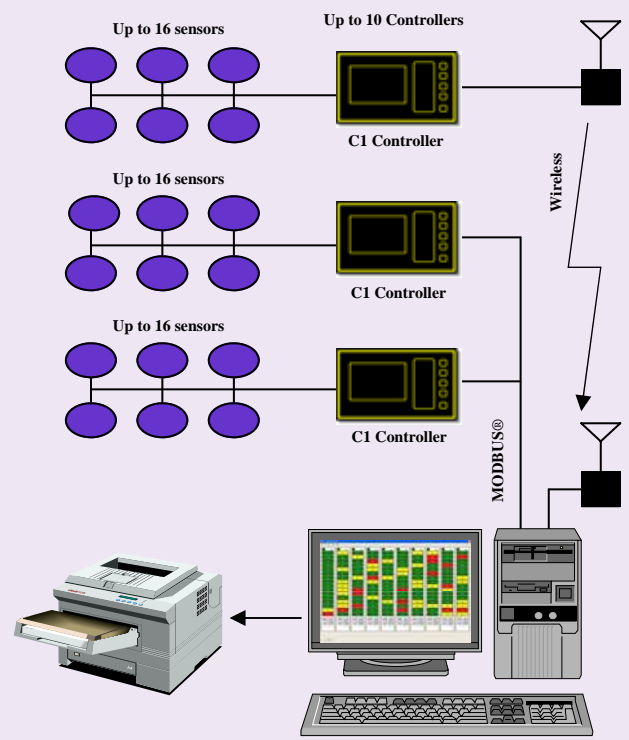
CDROM Drive (CD/RW recommended)

Minimum one RS-485 serial interface (Native serial port recommended)

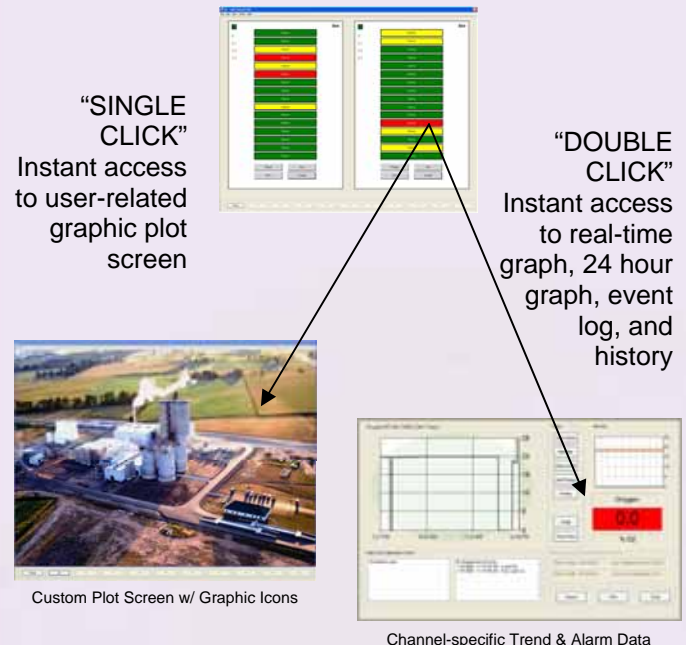
Monitor resolution of 1280 x 1024 (16 bit color)

Printer (optional)

Support 3 months email support standard; additional support plans available



Typical Configuration



Real-Time Data Access



2513 Hwy 846, Santa Fe, Texas 77510
 (409) 927-2980 • (409) 927-4180 Fax
 www.gdscorp.com • info@gdscorp.com

Represented by: