

GDS-48 Remote Sensor

Catalytic Bead, SmartIR Infrared, Photoionization

- ◆ CSA Certified for Explosion Proof Installations
- ◆ Accepts GDS Corp catalytic bead, SmartIR infrared and PID sensors
- ◆ Three-wire output for easy connection to GDS Corp bridge-style direct sensor inputs
- ◆ Field-replaceable sensor modules
- ◆ Improves system noise immunity by enclosing sensor output signals within metallic sensor head

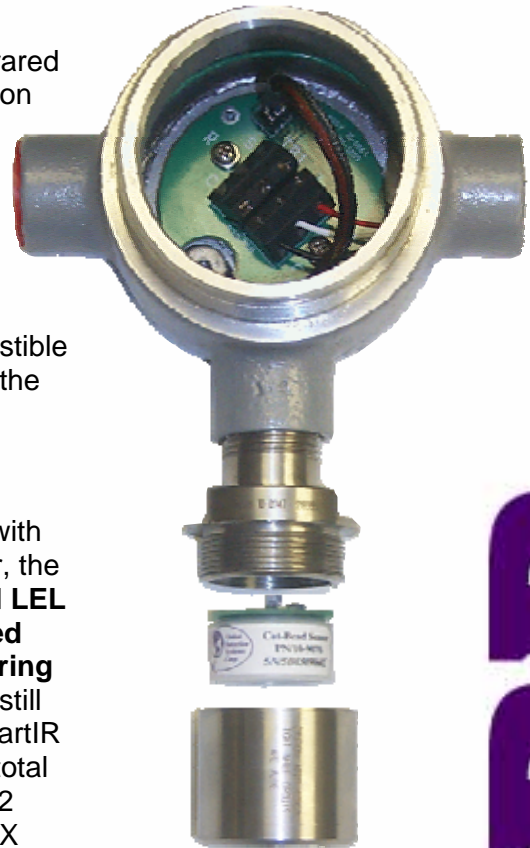
The GDS-48 Remote Sensor accepts catalytic bead LEL sensors, SmartIR infrared LEL and CO2 sensors and Photoionization (PID) sensors for detection of Volatile Organic Compounds (VOCs). Sensor output is transmitted to an appropriate receiver device such as a C1 or C2 Protector-series controller or GASMAX monitor.

Industry-standard Catalytic Bead combustible sensors can be remotely installed using the GDS-48 Remote Sensor at locations in excess of 1000 ft from the monitor or controller.

By replacing the Catalytic Bead sensor with the SmartIR infrared combustible sensor, the GDS-48 **allows existing catalytic bead LEL installations to be upgraded to infrared technology with no change in field wiring** or functionality. While periodic testing is still required to ensure continued safety, SmartIR sensors offer a 5 year MTBF and lower total cost of ownership. GDS Corp. C1 and C2 Protector-series controllers and GASMAX monitors provide the necessary bridge input circuitry and adjustable excitation voltage.

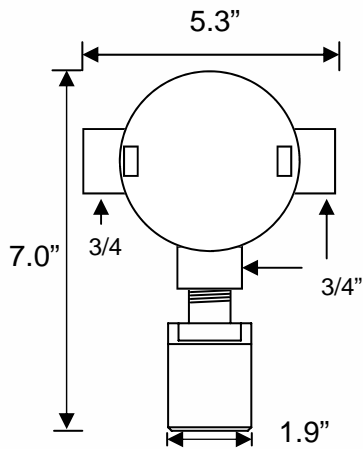
For remote detection of Volatile Organic Compounds, the GDS Corp Photoionization sensor (PID) can be installed. Two ranges are available: 0-20 ppm Isobutylene and 0-2000 ppm Isobutylene.

Calibration of the monitored gas value must be performed at the receiver device. GDS Corp. offers single, dual, eight and sixteen channel controllers suitable for calibration, alarming, display and retransmission of monitored gas values.



2513 Hwy 646, Santa Fe, Texas 77510
(409) 927-2980 • (409) 927-4180 Fax
www.gdscorp.com • info@gdscorp.com

GDS CORP



- Operating Voltage** Catalytic Bead: 2.0 VDC +/- 5%
 SmartIR Infrared: 4.5 VDC +/- 5%
 PID Detector: 4.0 VDC +/- 5%
- Input** Accepts bridge-style inputs from GDS Corp catalytic bead, SmartIR infrared or Photoionization (PDI) detector
- Output** Bridge-style three-wire output to GDS Corp C1 and C2 Protector-series alarm and display controllers
- Temp Range** Catalytic Bead: -30°C to +70°C
 SmartIR Infrared: -30°C to +50°C
 PID Detector: -10°C to +50°C
- Housing** Sensor head 316 stainless steel; junction box powder-coated aluminum
- Dimensions** Width 5.4" (137 mm), Height 8" (203 mm), Depth 5" (127 mm)
 Shipping weight 6.5 pounds (3 kg)
- Approvals** Sensor Head CSA certified for Div. 1 & 2 Groups B, C, D; Junction Box CSA certified for Div 1 & 2 Groups C, D
- Warranty** Two years on electronics and one year on sensors from date of purchase

GDS-48 Order Guide ^{1, 2}

GDS48 A - B - C

Suffix "A" - Sensor Head Type

1 Stainless Steel Explosion-Proof (XP)

2 Stainless Steel (XP) with splash guard²

Suffix "B" - Sensor Type

50 Smart IR 0-100% LEL (Methane)

51 Smart IR 0-100% LEL (Propane)

52 Smart IR 0-100% Volume (Methane)

53 Smart IR 0-5% Volume CO₂

60 Photoionization Detector (0-2000ppm)

61 Photoionization Detector (0-20ppm)

70 Catalytic Bead for LEL

80 MOS H2S 0-50 ppm

90 4-20mA Input

Suffix "C" - Target Gas Range

1 0-1.00

4 0-25

7 0-500

2 0-5.00

5 0-50

8 0-1000

3 0-10.0

6 0-100

9 Other

Note 1: No calibration capability exists within the GDS-48. To ensure accurate readings, zero and span calibration MUST BE performed by the receiving device.

Note 2: Receiving device MUST support bridge-style input circuit.



2513 Hwy 846, Santa Fe, Texas 77510
 (409) 927-2980 • (409) 927-4180 Fax
 www.gdscorp.com • info@gdscorp.com

Represented by: